

DATASHEET LUX GLENDER BASIC

LUX GLENDER BASIC

Content

BASIC for Lilly ø 42,4 mm and Emil 40 x 40 mm	4	Installation Instructions - cover plastic - SAFE asymmetrical	26
BASIC PLUS for Lilly ø 42,4mm and Emil 40 x 40 mm	5	Support bracket for screwing	27
BASIC for ø 48,3 mm - ø 60,3 mm - 60 x 45 mm	6	Support brackets for screwing and welding	28
Alu-wood-profile	7	Seperation base	29
Photometric data for system BASIC (wood) - symmetrical light distribution	8	Installation Instructions - separation base	30
Photometric data for system BASIC (wood) - symmetrical light distribution	9	Corner connector 90° and joint connector	31
Photometric data for system BASIC (wood) - asymmetrical light distribution	10	Joint closures	32
Photometric data for system BASIC (wood.) - asymmetrical light distribution	11	Lock BASIC and SAFE	33
BASIC - Custom-made LED-handrail	12	Installation Instructions - lock SAFE	34
LED-strip information	13	Installation Instructions - lock BASIC PLUS	35
LED-strip information	14	Retaining clip for cable and LED tape - groove 24 mm	36
Curved LED-handrails	15	Retaining clip for NEON-Flex for system BASIC - groove 24mm	37
Stainless steel - slotted pipes	16	Slot locking profile	38
Stainless steel - slotted pipes - Lilly - ø 42,4 x 1,5 mm	17	Universal fixing bolt	39
Stainless steel - slotted pipes - Paula - ø 48,3 x 1,5 mm	18	Universal fixing bolt with a clamp for expansion gap	40
Stainless steel - slotted pipes - Nina - ø 60,3 x 1,5mm	19	Groove tube - ring	41
Stainless steel - slotted pipes - Emil - 40 x 40 x 1,5 mm	20	Handrail holder hollow and full	42
Stainless steel - slotted pipes - Ronny - 60 x 45 x 1,5 mm	21	Retaining clips	43
Alu-wood-profile	22	End cap for welding and screwing	44
Plastic cover - symmetrical	23	Sliding block - simple and dual	45
Installation Instructions - cover plastic	24	Installation Instructions - Sliding block	46
Plastic cover - asymmetrical	25		

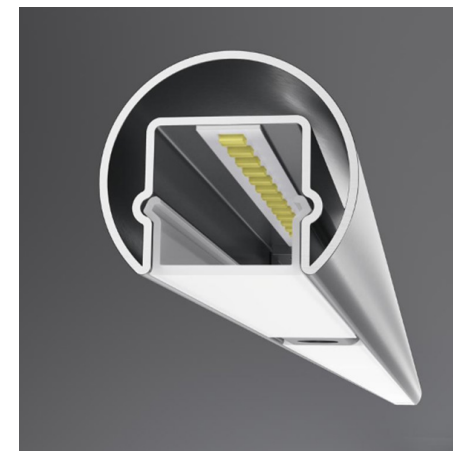
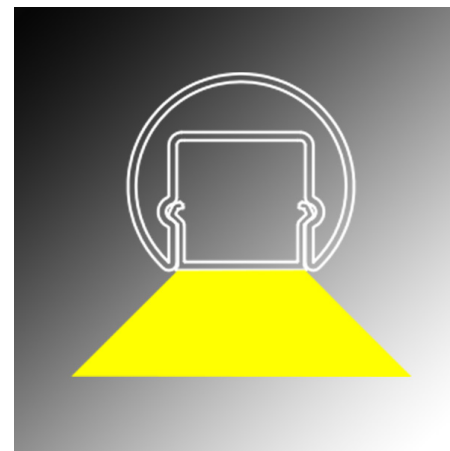
LUX GLENDER BASIC

LUX GLENDER - BASIC

Handrail material	ASI 304 or ASI 316
Handrail dimension	ø 42,4, ø 48,3, ø 60,3, 40 x 40 mm, 60 x 45 mm
Light source	LED-strip
Operating voltage	24 VDC
Power	6, 10, 15, 20 W/m
Light color temperature	1800 K, 2000 K, 2200 K, 2700 K, 3000 K, 4000 K, 5000 K, RGB, RGBW, TW, RGBTW
CRI	> 90 except 1800 K
Protection LED-Strip	IP20 or IP65
Operating temperatur	-20 ... 45°C
Life cicle	> 50.000 h
Dimmable	yes (PWM)
Cover material	PMMA, dull or clear
Light distribution	symmetrical
Vandals safety	no
Applications	indoor, outdoor

APPLICATION EXAMPLES:

- Office, doctor's or law offices
- Retirement home
- Hospitals
- Privat housholders
- Privat gardens
- Hotels, bars, restaurants
- Schools, children daycare, kindergarten, universities

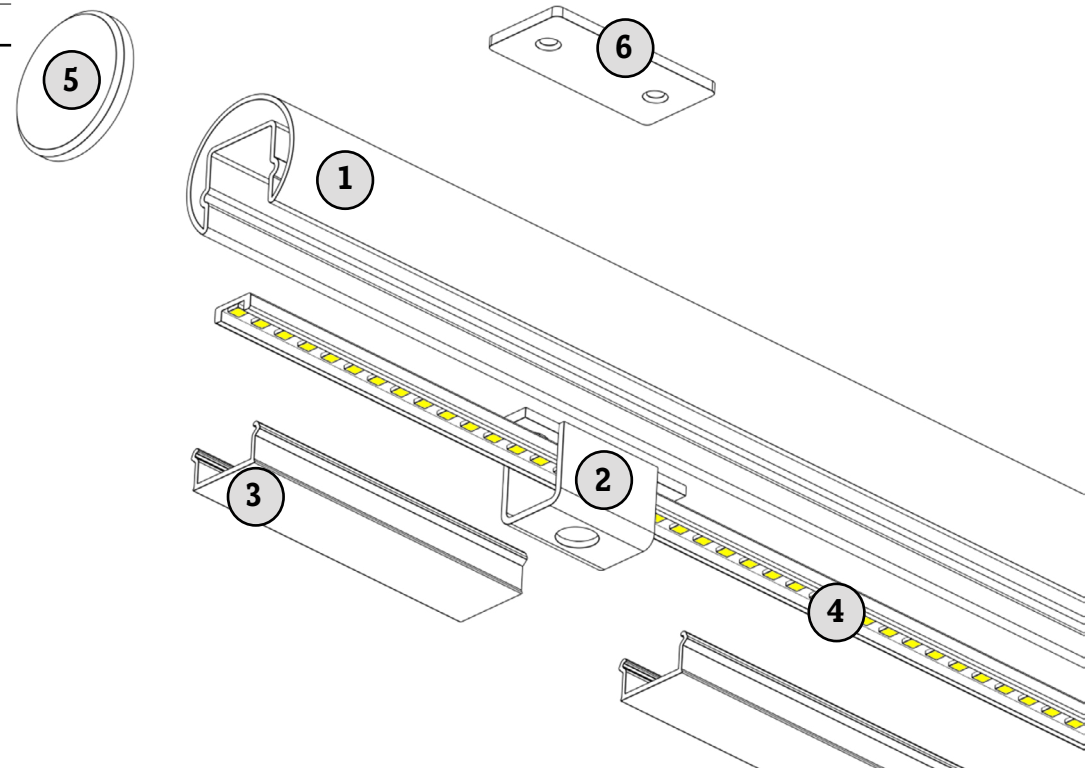


LUX GLENDER BASIC

BASIC for Lilly ø 42,4 mm and Emil 40 x 40 mm

Item	Description	Notes
1	Handrail profile	Stainless steel ASI 304 or ASI 316, available for profile Lilly ø 42,4 mm and Emil 40 x 40 mm
2	Support bracket	For welding in the groove or to bolt together with sliding block
3	LED-Strip cover	Mat PMMA cover symmetrical light distribution or clear PMMA cover asymmetrical light distribution
4	LED-Strip	IP00 for indoor and IP65 for outdoor
5	End cap	For welding
6	Sliding block	For fixing of support bracket, if not welded

- Further information regarding components can be found in the LED datasheet and in the description of system components.
- Handrail profiles and PMMA covers will be delivered as 6-meter.
- LED strips will be supplied in custom lengths as needed, and planning must be done by the customer.
- Customizations such as RGB, colors, etc., are available upon request.
- All components must be assembled and connected by a qualified firm.

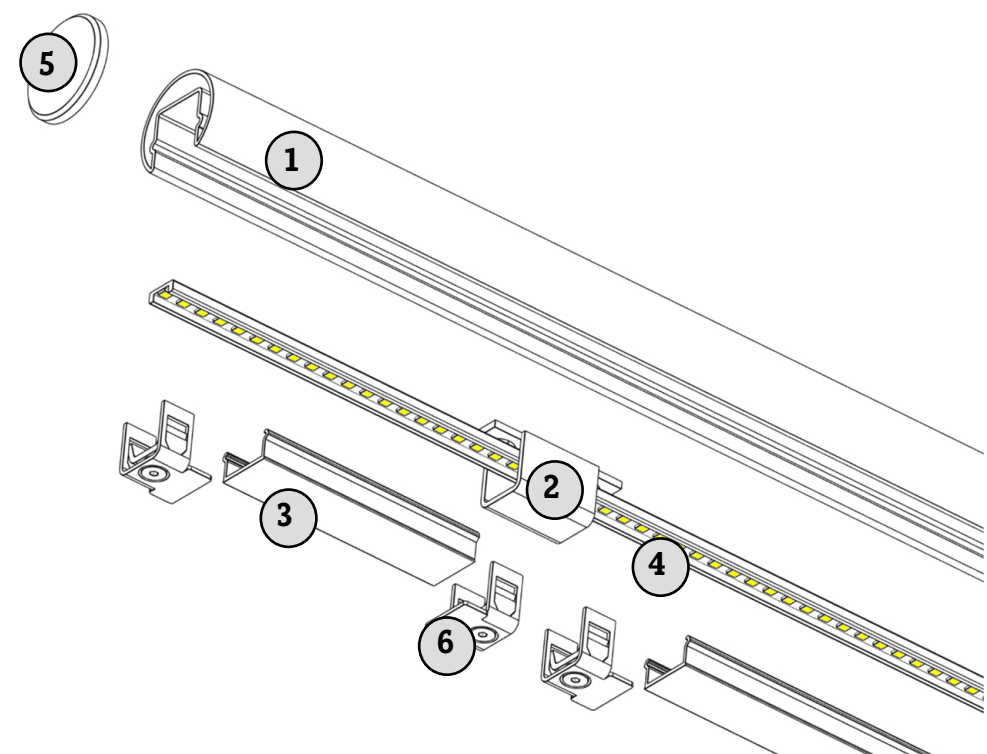


LUX GLENDER BASIC

BASIC PLUS for Lilly ø 42,4 mm and Emil 40 x 40 mm

Item	Description	Notes
1	Handrail profile	Stainless steel ASI 304 or ASI 316 available for profile Lilly ø 42,4mm and Emil 40 x 40 mm
2	Holding clamp	For welding in the groove or to bolt together with sliding block
3	LED-strip cover	Mat PMMA cover symmetrical light distribution or clear PMMA cover asymmetrical light distribution
4	LED-strip	IP00 for indoor IP65 for outdoor
5	End cap	For welding
6	Shutter	Prevents access inside. Allows thermal expansion of the PMMA cover and increases insect protection (minimizes insects from entering behind the cover)

- Further information regarding components can be found in the LED datasheet and in the description of system components.
- Handrail profiles and PMMA covers will be delivered as 6-meter.
- LED strips will be supplied in custom lengths as needed, and planning must be done by the customer.
- Customizations such as RGB, colors, etc., are available upon request.
- All components must be assembled and connected by a qualified firm.

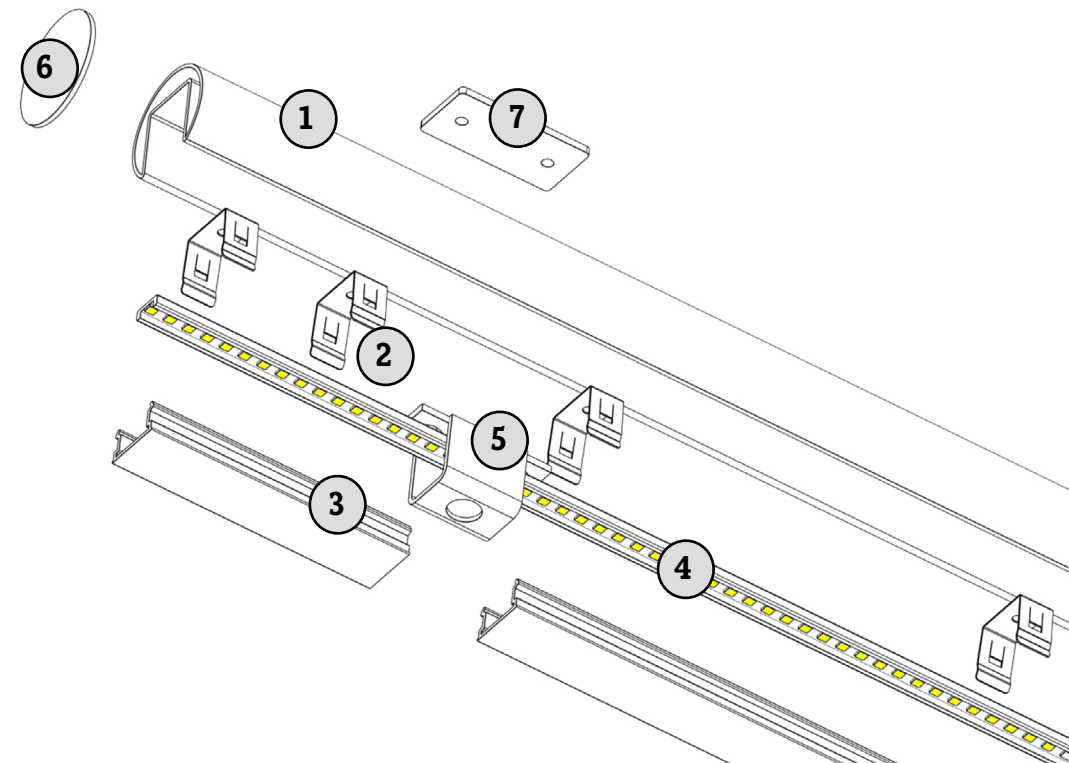


LUX GLENDER BASIC

BASIC for ø 48,3 mm - ø 60,3 mm - 60 x 45 mm

Item	Description	Notes
1	Handrail profile	Stainless steel ASI 304 or ASI 316, profile Paula ø 48,3 mm, Nina ø 60,3 mm and Ronny 60 x 45 mm
2	Holding clamp	To hold of LED-strip cover
3	LED-Strip cover	Mat PMMA cover, symmetrical Light distribution
4	LED-Strip	IP00 for indoor oder IP65 for outdoor
5	Support bracket	For welding in the groove to bolt together with sliding block
6	End cap	For welding or screwing
7	Sliding block	For fixing of support bracket, if not welded

- Further information regarding components can be found in the LED datasheet and in the description of system components.
- Handrail profiles and PMMA covers will be delivered as 6-meter.
- LED strips will be supplied in custom lengths as needed, and planning must be done by the customer.
- Customizations such as RGB, colors, etc., are available upon request.
- All components must be assembled and connected by a qualified firm.

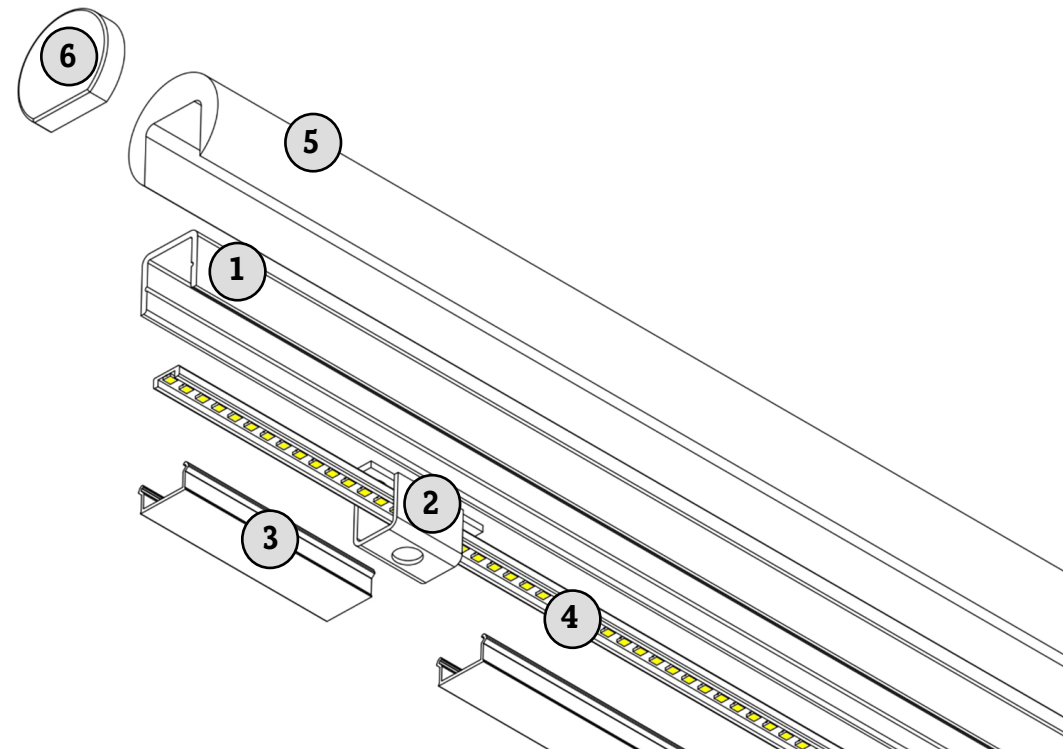


LUX GLENDER BASIC

BASIC - WOOD for various wooden handrail sizes

Item	Description	Notes
1	Alu-Wood-profile	Aluminium profile for use in wooden handrails
2	Support bracket	For screwing in the groove with alu profile and wood
3	LED-strip cover	Mat PMMA cover symmetrical light distribution or clear PMMA cover asymmetrical Light distribution
4	LED-strip	IP00 for indoor or IP65 for outdoor
5	Wood-profile	No delivery included, available from carpenter
6	Wood-end cap	No delivery included, available from carpenter

- Further information regarding components can be found in the LED datasheet and in the description of system components.
- Handrail profiles and PMMA covers will be delivered as 6-meter.
- LED strips will be supplied in custom lengths as needed, and planning must be done by the customer.
- Customizations such as RGB, colors, etc., are available upon request.
- All components must be assembled and connected by a qualified firm.



LUX GLENDER BASIC

Photometric data for system BASIC (wooden handrails incl.) - symmetrical light distribution

BASIC, IP20, symmetrical light distribution, LED-Strip cover dull				
Light color temperature [K]	Luminous flux [Lm/meter]			
	6 W/m	10 W/m	15 W/m	20 W/m
2700	230	386	574	735
3000	230	386	574	735
4000	247	416	619	792
5000	247	416	619	792

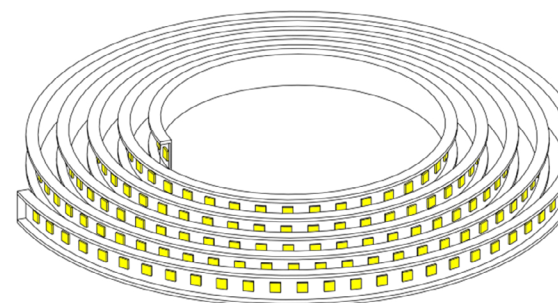
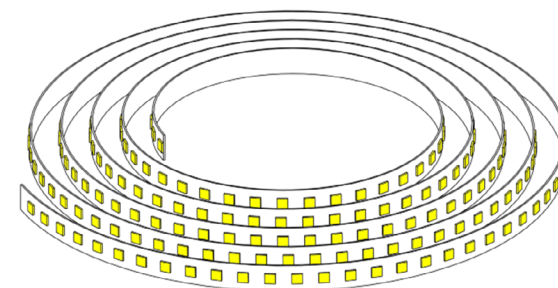
Total-system data: the LED-handrail completely assembled and measures, without wall or balustrade.

BASIC, IP65, symmetrical Light distribution, LED-Strip cover dull				
Light color temperature [K]	Luminous flux [Lm/meter]			
	6 W/m	10 W/m	15 W/m	20 W/m
ca. 2750	192	322	480	614
ca. 3050	209	352	523	670
ca. 3400	227	381	567	726
ca. 4000	227	381	567	726
ca. 5000	247	416	619	792

Total-system data: the LED-handrail completely assembled and measures, without wall or balustrade.

Customization i.e. RGB, Colors, etc. available upon request.

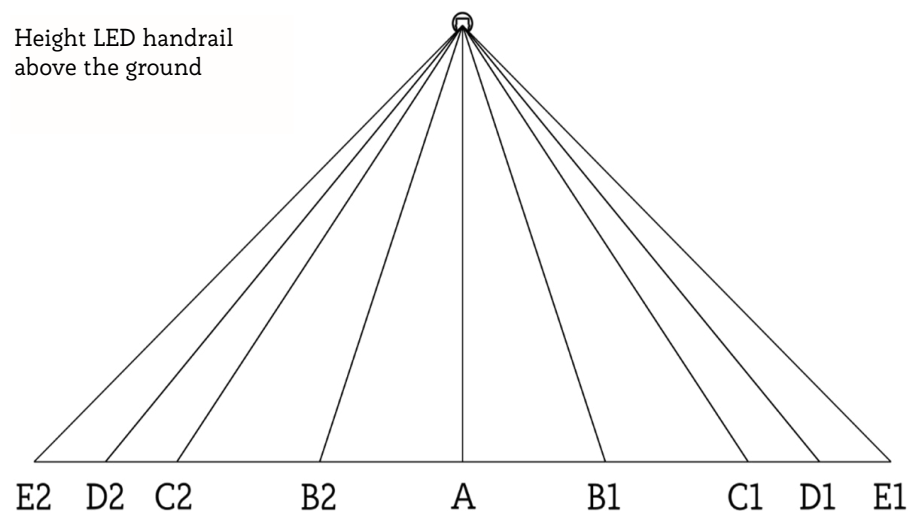
All informations also applies to LED handrails with Alu-WOOD profile.



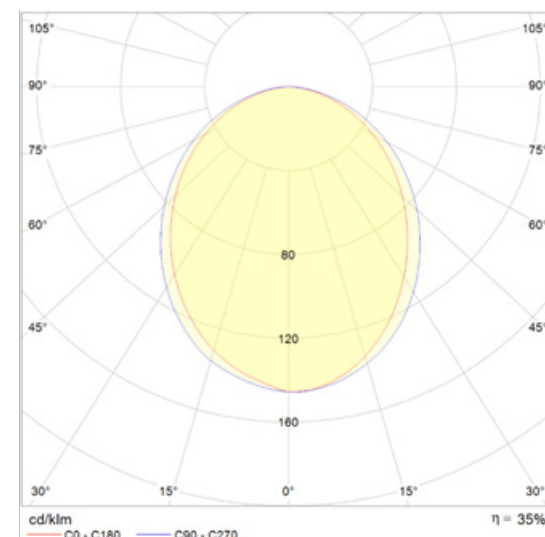
LUX GLENDER BASIC

Photometric data for system BASIC (wooden handrails incl.) - symmetrical light distribution

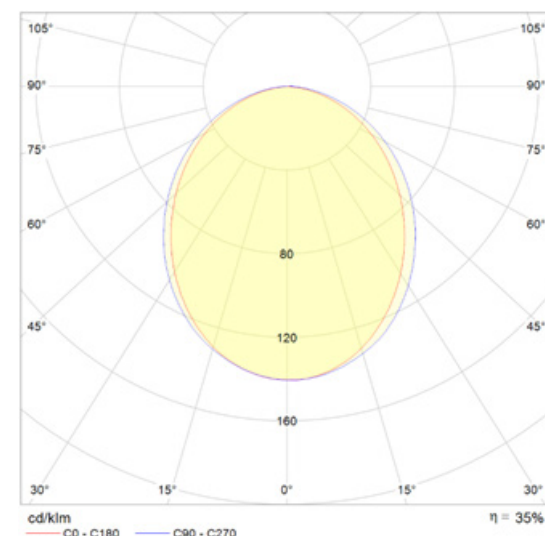
BASIC, symmetrical light distribution LED-strip cover dull, power 10 W/m										
Luminance intensity [lx]										
Point	H	E2	D2	C2	B2	A	B1	C1	D1	E1
Distance to A [mm]	1800	1500	1200	600	0	600	1200	1500	1800	
IP20 for indoor	850	12	20	35	122	272	122	35	20	12
IP65 for outdoor	850	11	19	34	120	264	121	35	20	12
IP20 for indoor	1300	22	33	51	116	174	116	51	33	22
IP65 for outdoor	1300	21	32	50	114	169	115	51	33	22



Note: Measuring point is in the middle of a 5 meter length lamp, without wall or balustrade. This data have been measured and generated by us and provide just a rough orientation. In individual cases are project-related photometric subsequent measurement necessary. For subsequent measurement use our Eulumdat data.



Polardiagramm: BAISC, IP20



Polardiagramm: BAISC, IP65

LUX GLENDER BASIC

Photometric data for system BASIC (wooden handrails incl.) - asymmetrical light distribution

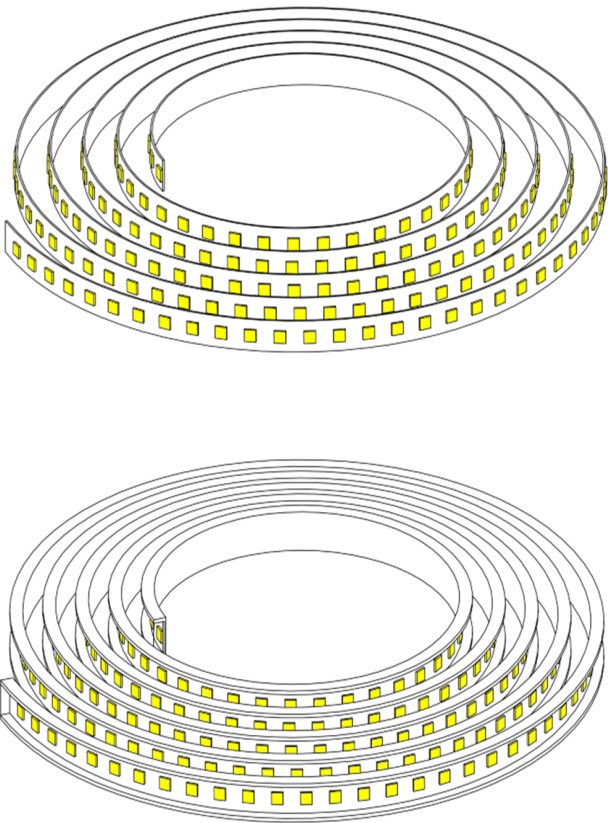
BASIC, IP20, asymmetrical light distribution, LED-strip cover dull				
Light color temperature [K]				
	6 W/m	10 W/m	15 W/m	20 W/m
2700	280	475	705	900
3000	280	475	705	900
4000	300	510	760	970
5000	300	510	760	970

Total-system data: the LED-handrail completely assembled and measures, without wall or balustrade.

BASIC, IP65, asymmetrical light distribution, LED-strip cover dull				
Light color temperature [K]	Luminous flux [[Lm/Meter]			
	6 W/m	10 W/m	15 W/m	20 W/m
ca. 2750	220	370	550	705
ca. 3050	235	400	610	765
ca. 3400	235	400	610	765
ca. 4000	235	400	610	765
ca. 5000	255	430	630	820

Total-system data: the LED-handrail completely assembled and measures, without wall or balustrade.

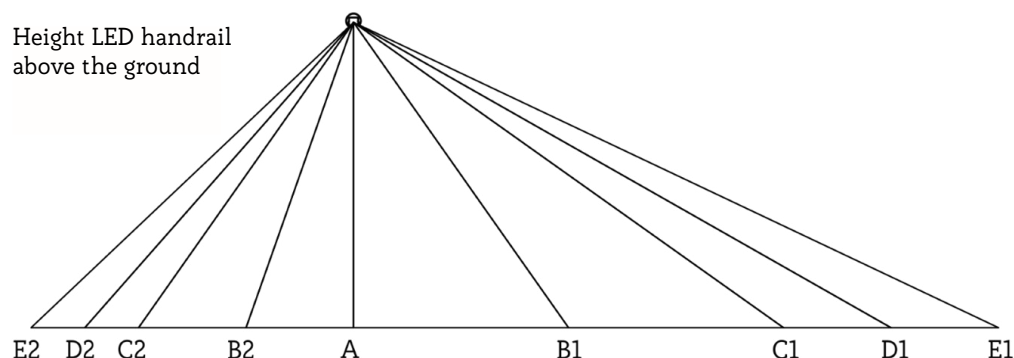
Customization i.e. RGB, Colors, etc. available upon request.
All informations also applies to LED handrails with Alu-WOOD profile.



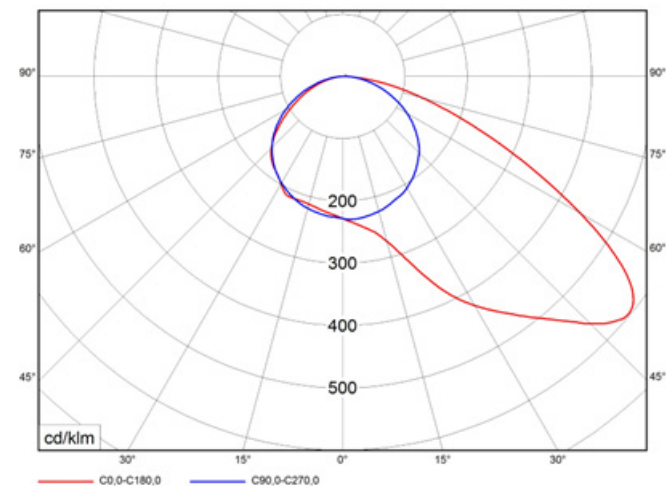
LUX GLENDER BASIC

Photometric data for system BASIC (wooden handrails incl.) - asymmetrical light distribution

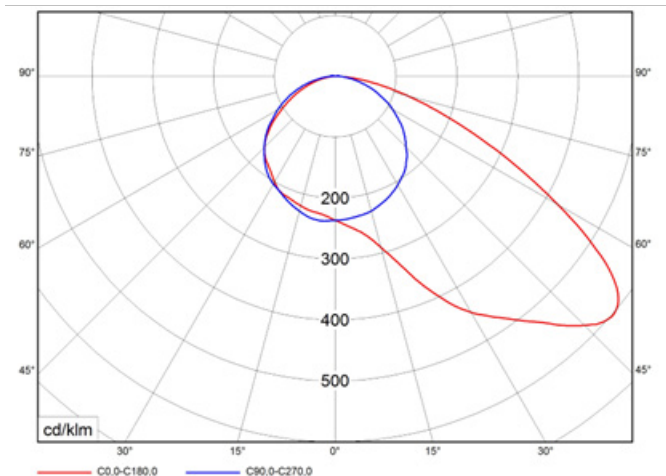
BASIC, asymmetrical light distribution LED-strip cover clear, power 10 W/m										
Luminance intensity [lx]										
Point	H	E2	D2	C2	B2	A	B1	C1	D1	E1
Distance to A	[mm]	1800	1500	1200	600	0	600	1200	1500	1800
IP20 for indoor	850	24	42	75	246	469	486	266	159	94
IP65 for outdoor	850	25	43	76	244	477	492	259	152	89
IP20 for indoor	1300	47	72	109	224	299	341	270	226	174
IP65 for outdoor	1300	48	73	108	221	304	349	274	226	170



Note: Measuring point is in the middle of a 5 meter length lamp, without wall or balustrade. This data have been measured and generated by us and provide just a rough orientation. In individual cases are project-related photometric subsequent measurement necessary. For subsequent measurement use our Eulumat data.



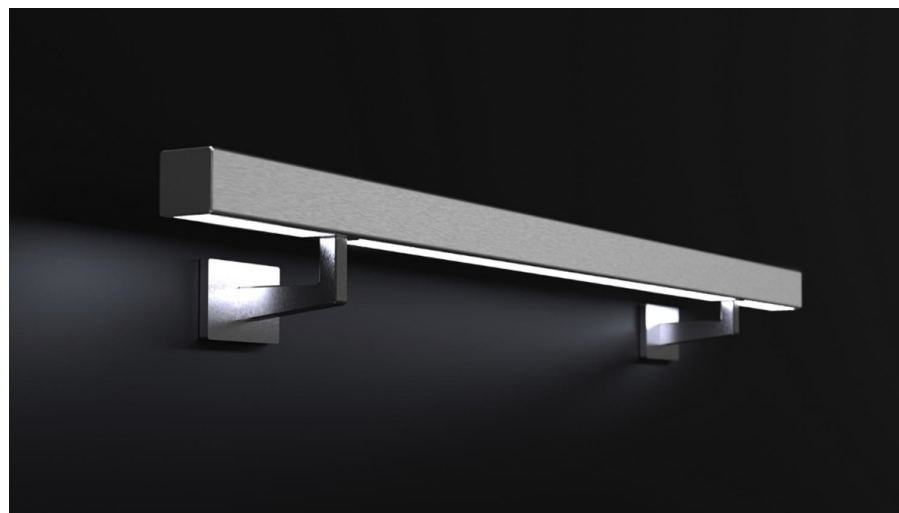
Polardiagramm: BAISC asymmetrisch, IP20



Polardiagramm: BAISC asymmetrisch, IP65

LUX GLENDER BASIC

BASIC - Custom-made LED-handrail



Custom LED-handrail:

Especially the product-line BASIC suits perfectly for manufacturing of a custom LED-handrail.

Just provide us your drawing or layout of your requested dimension, preferred power and light-color and we deliver you an completed handrail. Once mounted on the wall, we recommend connections by a certified electrician. Lux Glender BASIC provides a simple solution for the fabrication of LED Handrails. A perfect solution for installation by any number of trades. Feel free to contact us.

Orders can be placed from your take-off or through our online portal.

Custom LED-handrail - powder coated:

Now available in black and white. Other colors on request.

LUX GLENDER BASIC

LED-strip information

Tape length:

Our standard producing size of LED-strips is 25 to 50 m. Then the tapes are shortened or lengthened to the suit of the project. The maximum length of the tape depends on the power of LED-strip.

Find here the maximum length according to the power:

20 W/m - 8 m
15 W/m - 10 m
10 W/m - 15 m
6 W/m - 23 m

With central or double-sided feed, the maximum tape length can be doubled.

Light color/luminous flux/CRI:

The stated data regarding light color, luminous flux and CRI refer to the LED-strip without encapsulation.

The LUX GLENDER plastic cover (transparent or opal) can influence this data. Take the respective information out of the photometric data sheet.

IP65 encapsulated LED-strip:

We tailor and encapsulate your IP65 custom-made LED-Strip.

By placing the order give us the information about the exact length (rounded down to 5 cm) of your LED-strip.

Dimensioning of power transformer / dimmer:

The power transformer should be approx. 20% higher powered, than the power of the LED-strip.

For example: 5 m LED-strip with 10 W/m equates power of 50 W.

The power transformer should be min. 60 W.

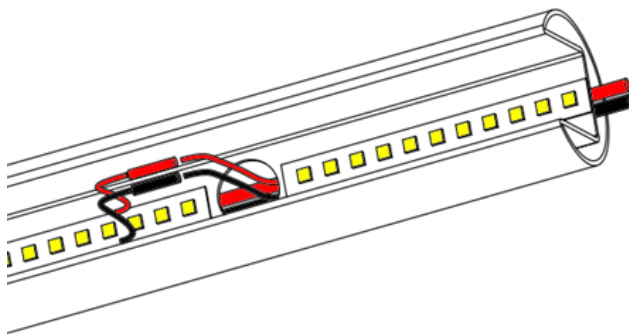
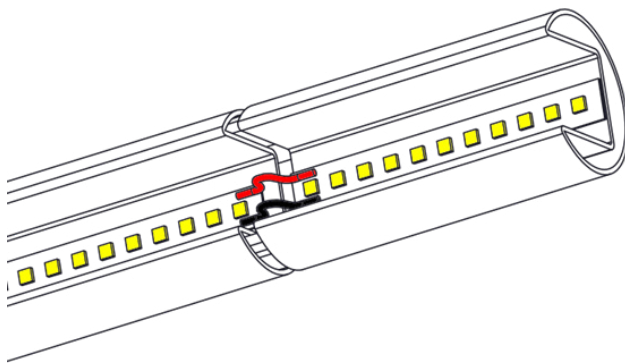
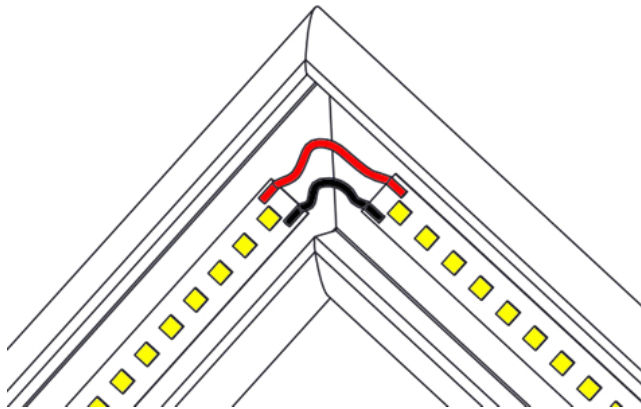
The housing of the trafo can be placed in a distribution-/control box. It is possible to place it in a in-wall box, under the floor, in the prop or even in the handrail. Depending on the distance from trafo to the handrail you need to make sure, you have an appropriate wire gauge for the application.

The dimmer can be placed near the trafo. As alternative it is possible to use an universal-device.

Our LED-strips are dimmable by PWM dimmer.

LUX GLENDER BASIC

LED-strip information



Installation Instructions:

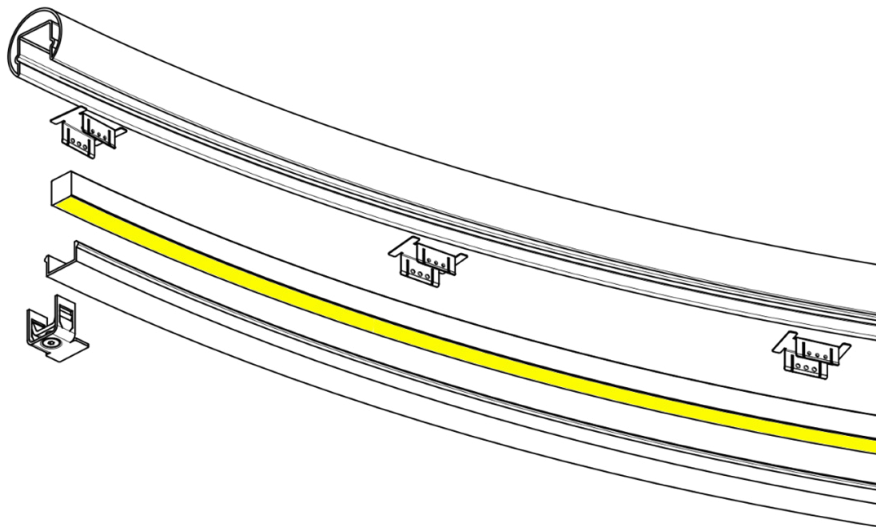
- Find the installation instructions in detail in our installation sheet for LED-strips.

Installation Instructions related to the LED-handrail profile:

- After assembling and welding the handrail, the LED-strip can be inserted.
- Before adhering the LED strip, thoroughly clean the groove with alcohol.
- Avoid placing the LED-strip over the thermal expansion gap to prevent damage. Use a flexible connection between strips if needed.
- If the LED-strip needs to turn a corner, it should be separated and connected with a cable.
- Bending the LED-strip either top-down or bottom-up is possible without issues.
- Cables for additional feed-ins can be carried in the groove next to the LED-strip.
- Cables can also be routed through the cavity of the handrail, and they can be brought out again by drilling. It's advisable to use a stainless steel cable to pull the cables through.

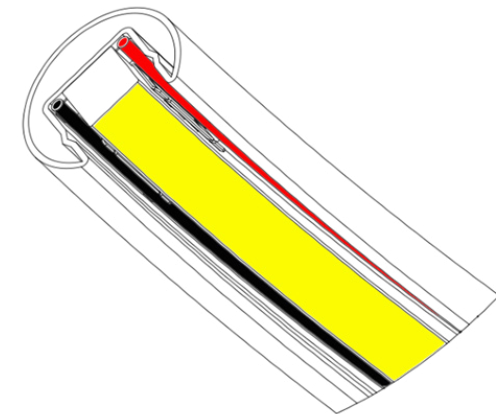
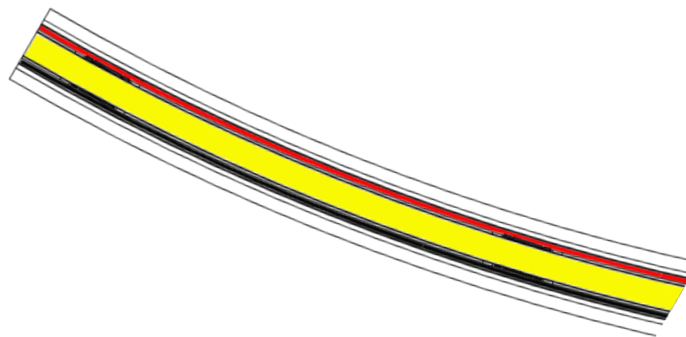
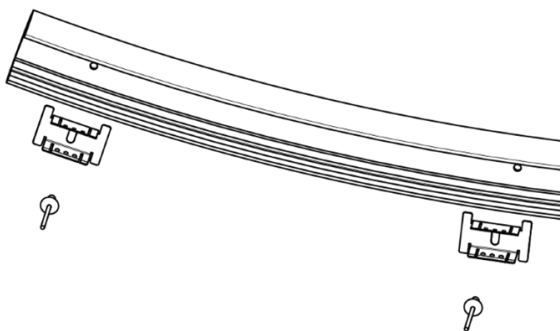
LUX GLENDER BASIC

Curved LED-handrails



Installation Instructions for curved handrails:

- NEON Flex Side Bend is best suited for curved handrails.
- The NEON flex is not compatible with asymmetrical cover.
- Use only with mat cover with symmetrical light distribution.
- Retaining clips for NEON flex are fastened with blind rivets or tacked. The distance between the clips should be 250-350 mm.
- Cables (up to approx. \varnothing 6mm or 6 mm²) can be laid next to the retaining clips.
- Up to a bending radius of 2 m the cover can be used without pre-bending. Below 2 m the cover has to be pre-bent extra. Minimum bending radius of the cover is 0.5 m.
- Stainless steel profile must be pre-bent. Exceptions are bending radii above approx. 90-100 m.
- The shutters are recommended for bent handrails, because then the cover is better held in the groove.



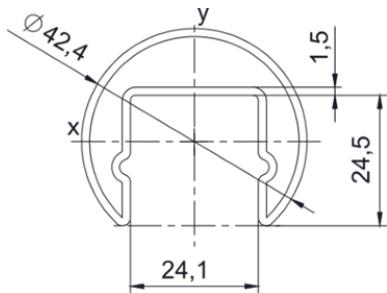
LUX GLENDER BASIC

Stainless steel - slotted pipes

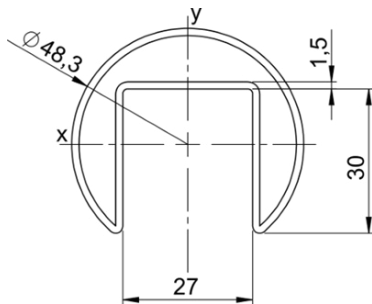
Stainless steel slotted pipes in stock

Project-related stainless steel - slotted pipes

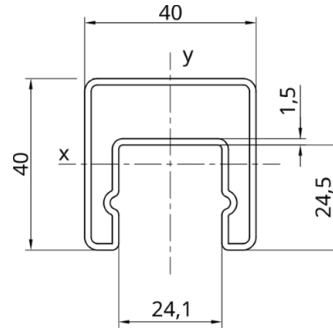
LILLY - \varnothing 42,4 mm



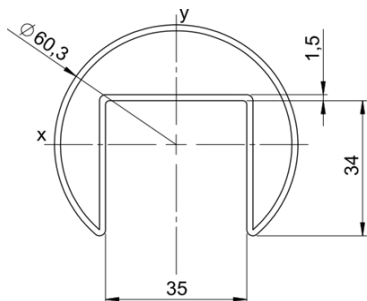
PAULA - \varnothing 48,3 mm



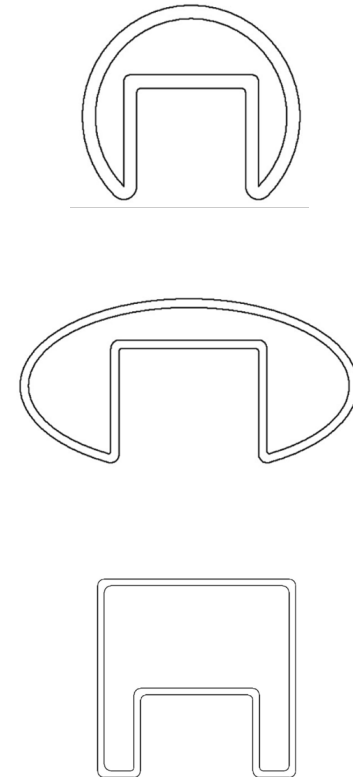
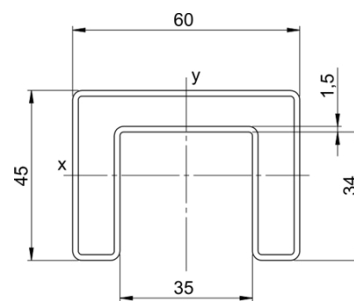
EMIL - 40 x 40 mm



NINA - \varnothing 60,3mm



RONNY - 60 x 45 mm



Special profile:

Alongside our standard stainless steel handrail profiles, we also offer project-specific special profiles. The minimum order quantity is 3000 meters. We provide options such as oval profiles, profiles with larger wall thicknesses (e.g., \varnothing 50 x 3 mm), and special sizes for both round and square profiles.

If desired, we support you in your planning.

LUX GLENDER BASIC

Stainless steel - slotted pipes - Lilly - \varnothing 42,4 x 1,5 mm

Dimensions	
Outer diameter	\varnothing 42,4 mm
Wall thickness	1,5 mm
Slot B x T	24 x 24,5 mm
Delivery length	6010 mm

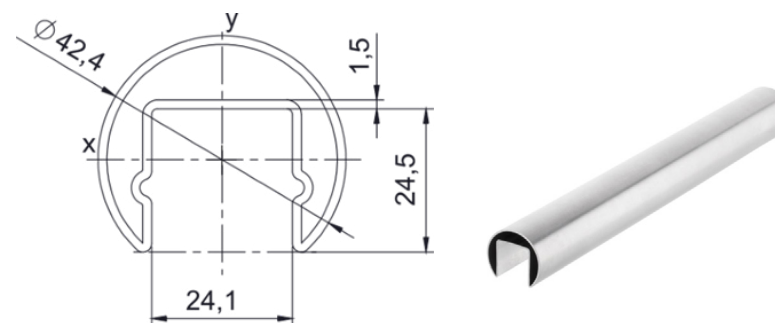
Item no.	Material	Surface	Weight
A000003	1.4301/07	Blank IIIC 2B	2,1 kg/m
A000004	1.4301/07	K240	2,1 kg/m
A000202	1.4401/04	Blank IIIC 2B	2,1 kg/m
A000203	1.4401/04	K240	2,1 kg/m

This profile meets following accesibility standards:

Germany: DIN 18040, DIN 18024, DIN 18025
Austria: ÖNORM B 1600:2011, ÖNORM B 1601:1994, ÖNORM B 1602:2001, ÖNORM B 1603:2005
Switzerland: SN 521 500, SN 640 075, SN 640 238, SN 640 568

General information about the stainless handrail profile in \varnothing 42,4 x 1,5mm

- Profile with cold rolled groove.
- Laser beam welded with forming gas, weld seam brushed.
- Manufacturing according to DIN EN 10088 T2, DIN EN ISO 9445T2, cold rolled, type 2B.
- Dimensions according DIN EN 10162 und EN 10021.
- Manufacturers marks in the groove.
- Inspection certificate 3.1 available.
- Tracks made by the roll-forming process are normal. Site finishing by installer may be necessary.
- Double-sided cutting cannot be ruled out.
- Manufacturing length 6010 mm -0/+20 (Cold saw-cut).
- Further polishes, grits, powder coating or sandblasting on request.



Ideal for stairs, footbridges, balconies and bridges - barrier-free constructions.

Resistance- and area moment			
Wx	Wy	Ix	Iy
1,5 cm ³	2,5 cm ³	2,92 cm ⁴	5,28 cm ⁴

Maximum span			
Horizontal payload F	0,5 kN/m	1 kN/m	2 kN/m
Maximum profile span L	2,1 m	1,5 m	1,0 m



Note: This data applies only to the profile. The respective connection points must be calculated separately. For post/support distances in connection with LUX GLENDER brackets, please refer to the respective product data sheets

LUX GLENDER BASIC

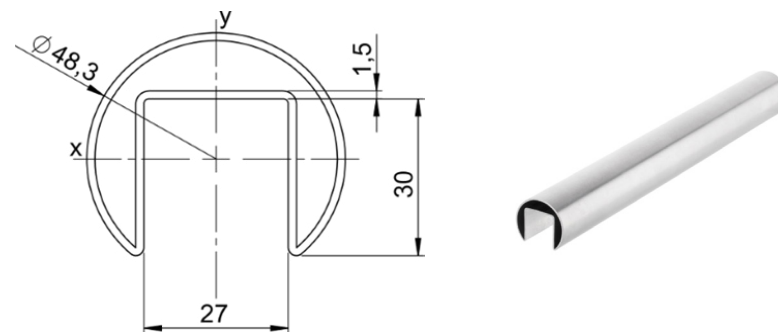
Stainless steel - slotted pipes - Paula - \varnothing 48,3 x 1,5 mm

Dimensions	
Outer diameter	\varnothing 48,3 mm
Wall thickness	1,5 mm
Slot B x T	27 x 30 mm
Delivery length	6010 mm

Item no.	Material	Surface	Weight
A000006	1.4301/07	Blank IIIC 2B	2,4 kg/m
A000008	1.4301/07	K240	2,4 kg/m
A000009	1.4401/04	Blank IIIC 2B	2,43 kg/m
A000253	1.4401/04	K240	2,43 kg/m
A000011	1.4001	Blank IIIC 2B	2,4 kg/m
A000012	1.4001	K240	2,4 kg/m

General information about the stainless handrail profile in \varnothing 48,3 x 1,5 mm

- Profile with cold rolled groove.
- Laser beam welded with forming gas, weld seam brushed.
- Manufacturing according to DIN EN 10088 T2, DIN EN ISO 9445T2, cold rolled, type 2B.
- Dimensions according DIN EN 10162 und EN 10021.
- Manufacturers marks in the groove.
- Inspection certificate 3.1 available.
- Tracks made by the roll-forming process are normal. Site finishing by installer may be necessary.
- Double-sided cutting cannot be ruled out.
- Manufacturing length 6010 mm -0/+20 (Cold saw-cut).
- Further polishes, grits, powder coating or sandblasting on request.



Ideal for stairs, footbridges, balconies and bridges.

Resistance- and area moment			
W_x	W_y	I_x	I_y
2,0 cm ³	3,2 cm ³	4,6 cm ⁴	7,74 cm ⁴

Maximum span				
Horizontal payload F	0,5 kN/m	1 kN/m	2 kN/m	
Maximum profile span L	2,3 m	1,7 m	1,0 m	



Note: This data applies only to the profile. The respective connection points must be calculated separately. For post/support distances in connection with LUX GLENDER brackets, please refer to the respective product data sheets

LUX GLENDER BASIC

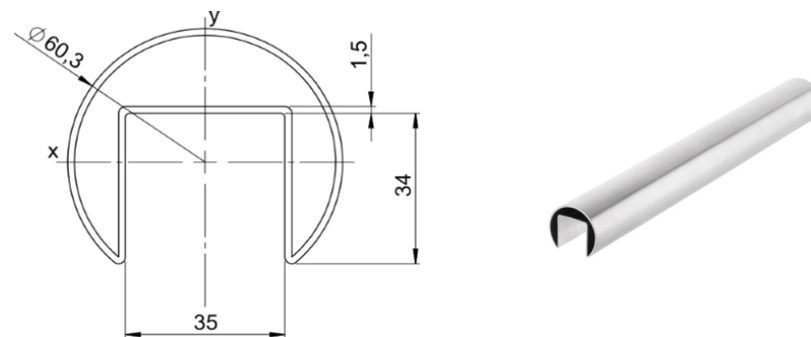
Stainless steel - slotted pipes - Nina - $\varnothing 60,3 \times 1,5\text{mm}$

Dimensions	
Outer diameter	$\varnothing 60,3 \text{ mm}$
Wall thickness	1,5 mm
Slot B x T	35 x 34 mm
Delivery length	6010 mm

Item no.	Material	Surface	Weight
A000013	1.4301/07	Blank IIIc 2B	2,9 kg/m
A000014	1.4301/07	K240	2,9 kg/m
A000015	1.4401/04	Blank IIIc 2B	2,93 kg/m
A000016	1.4401/04	K240	2,93 kg/m

General information about the stainless handrail profile

- Profile with cold rolled groove.
- Laser beam welded with forming gas, weld seam brushed.
- Manufacturing according to DIN EN 10088 T2, DIN EN ISO 9445T2, cold rolled, type 2B.
- Dimensions according DIN EN 10162 und EN 10021.
- Manufacturers marks in the groove.
- Inspection certificate 3.1 available.
- Tracks made by the roll-forming process are normal.
- Site finishing by installer may be necessary.
- Double-sided cutting cannot be ruled out.
- Manufacturing length 6010 mm -0/+20 (Cold saw-cut).
- Further polishes, grits, powder coating or sandblasting on request.



Ideal for footbridges, balconies and bridges.

Resistance- and area moment			
W _x	W _y	I _x	I _y
3,1 cm ³	5,0 cm ³	8,44 cm ⁴	15,05 cm ⁴

Maximum span			
Horizontal payload F	0,5 kN/m	1 kN/m	2 kN/m
Maximum profile span L	3,1 m	2,15 m	1,6 m



Note: This data applies only to the profile. The respective connection points must be calculated separately. For post/support distances in connection with LUX GLENDER brackets, please refer to the respective product data sheets

LUX GLENDER BASIC

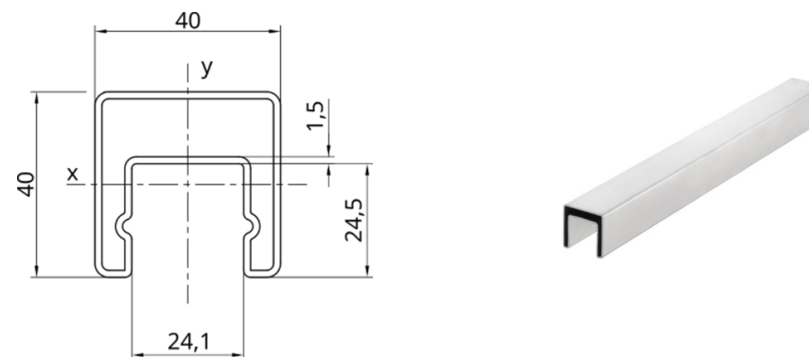
Stainless steel - slotted pipes - Emil - 40 x 40 x 1,5 mm

Dimensions	
Outer diameter	40 x 40 mm
Wall thickness	1,5 mm
Slot B x T	24 x 24,5 mm
Delivery length	6010 mm

Item no.	Material	Surface	Weight
A000017	1.4301/07	K240 axial	2,35 kg/m
A000018	1.4401/04	K240 axial	2,38 kg/m

General information about the stainless handrail profile

- Profile with cold rolled groove.
- Laser beam welded with forming gas, weld seam brushed.
- Manufacturing according to DIN EN 10088 T2, DIN EN ISO 9445T2, cold rolled, type 2B.
- Dimensions according DIN EN 10162 und EN 10021.
- Manufacturers marks in the groove.
- Inspection certificate 3.1 available.
- Tracks made by the roll-forming process are normal. Site finishing by installer may be necessary.
- Double-sided cutting cannot be ruled out. Manufacturing length 6010 mm -0/+20 (Cold saw-cut).
- Further polishes, grits, powder coating or sandblasting on request.



Ideal for stairs, footbridges, balconies and bridges.

Resistance- and area moment			
W _x	W _y	I _x	I _y
2,28 cm ³	3,39 cm ³	4,85 cm ⁴	6,79 cm ⁴

Maximum span			
Horizontal payload F	0,5 kN/m	1 kN/m	2 kN/m
Maximum profile span L	2,25 m	1,75 m	1,05 m

Note: This data applies only to the profile. The respective connection points must be calculated separately. For post/support distances in connection with LUX GLENDER brackets, please refer to the respective product data sheets

LUX GLENDER BASIC

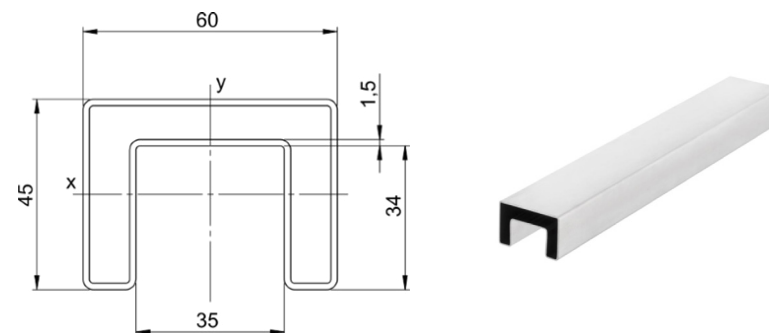
Stainless steel - slotted pipes - Ronny - 60 x 45 x 1,5 mm

Dimensions	
Outer diameter	60 x 45 mm
Wall thickness	1,5 mm
Slot B x T	35 x 34 mm
Delivery length	6010 mm

Item no.	Material	Surface	Weight
A000019	1.4301/07	K240 axial	3,13 kg/m
A000020	1.4401/04	K240 axial	3,17 kg/m

General information about the stainless handrail profile

- Profile with cold rolled groove.
- Laser beam welded with forming gas, weld seam brushed.
- Manufacturing according to DIN EN 10088 T2, DIN EN ISO 9445T2, cold rolled, type 2B.
- Dimensions according DIN EN 10162 und EN 10021.
- Manufacturers marks in the groove.
- Inspection certificate 3.1 available.
- Tracks made by the roll-forming process are normal.
- Site finishing by installer may be necessary.
- Double-sided cutting cannot be ruled out.
- Manufacturing length 6010 mm -0/+20 (Cold saw-cut).
- Further polishes, grits, powder coating or sandblasting on request.



Ideal for terraces, balconies, bridges and all-glass railings with LED lighting

Resistance- and area moment			
W _x	W _y	I _x	I _y
3,3 cm ³	6,3 cm ³	8,85 cm ⁴	18,9 cm ⁴

Maximum span			
Horizontal payload F	0,5 kN/m	1 kN/m	2 kN/m
Maximum profile span L	2,55 m	1,8 m	1,3 m



Note: This data applies only to the profile. The respective connection points must be calculated separately. For post/support distances in connection with LUX GLENDER brackets, please refer to the respective product data sheets

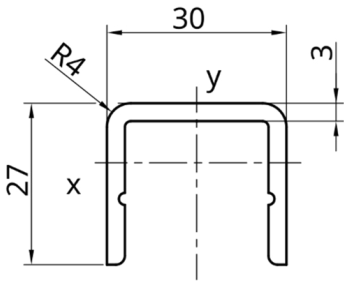
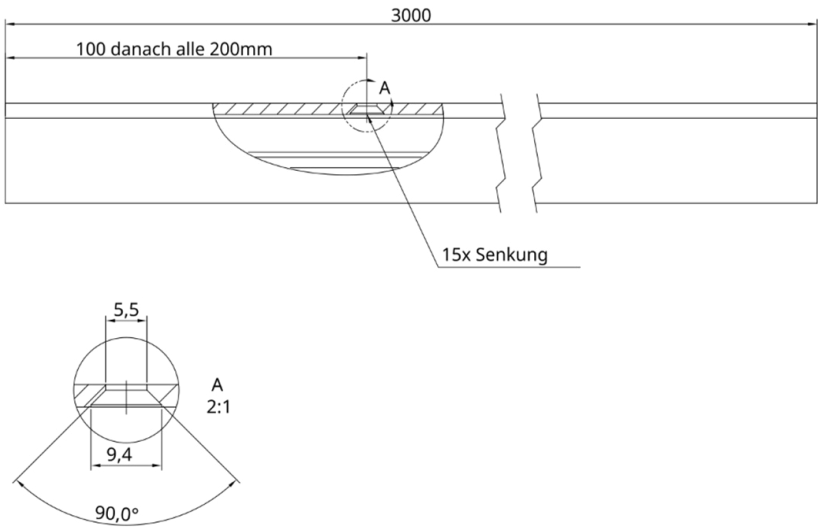
LUX GLENDER BASIC

Alu-WOOD-profile

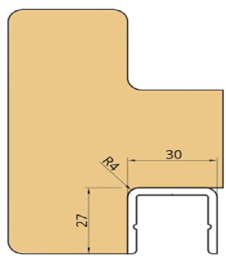
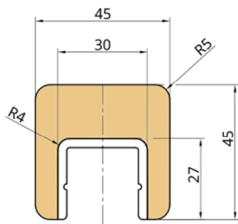
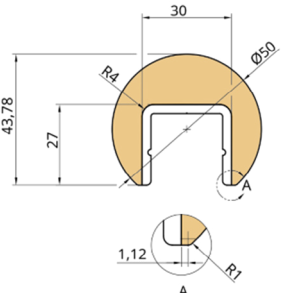
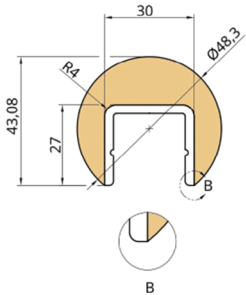
Dimensions	
Outer diameter	30 x 27 mm
Wall thickness	3 mm
Slot B x T	24 x 24 mm
Delivery length	3010 mm
Lowering	every 200 mm

Item no.	Material	Surface	Weight
A000019	EN-AW6060	natur	0,580 kg/m

Resistance- and area moment			
Wx	Wy	Ix	Iy
0,9 cm³	1,89 cm³	1,58 cm4	2,97 cm4



Ideal for wooden handrails for stairs, footbridges, balconies and bridges



Handrail and installation examples, delivery without wood

LUX GLENDER BASIC

Plastic cover - symmetrical

Productline	Item no.	For slot	For profile	Color	Material	Weight	Delivery length
BASIC, SAFE	A000119	24 mm	Lilly ø 42,4 mm Emil 40x40 mm	mat	PMMA	0,09 kg/m	6010 mm
BASIC	A000081	27 mm	Paula ø 48,3 mm	mat	PMMA	0,11 kg/m	6010 mm
BASIC	A000087	35 mm	Nina ø 60,3 mm Ronny 60x45 mm	mat	PMMA	0,12 kg/m	6010 mm

Coefficient of expansion of PMMA cover = $\text{ca. } 85 \cdot 10^{-6} / \text{K}$ bei 20°C - note by installation.

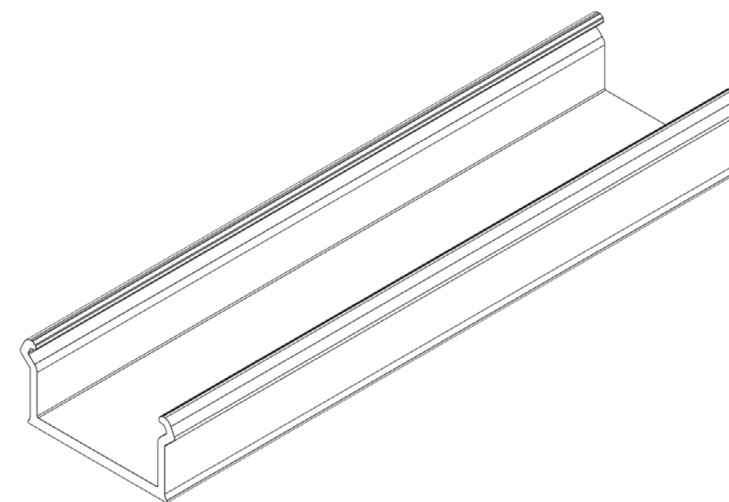
In case of initial length of 1m and a change in temperature of 40K makes a result of >> 3,4mm change in length.

In case of initial length of 6m and a change in temperature of 40K makes a result of >> 20,4mm change in length.

Further colors and forms - on request.

Applies to all of our plastic covers

- Special additional particles for homogeneous and sparkling light distribution
- Excellent optical characteristics
- High light transmission, excellent transparency
- Flammability test according to DIN IEC 60695-2-12 up to 675°
- High breaking strength and impact resistance
- Good surface hardness
- Very good UV, weather, and aging resistance
- Good recyclability



LUX GLENDER BASIC

Installation Instructions - cover plastic

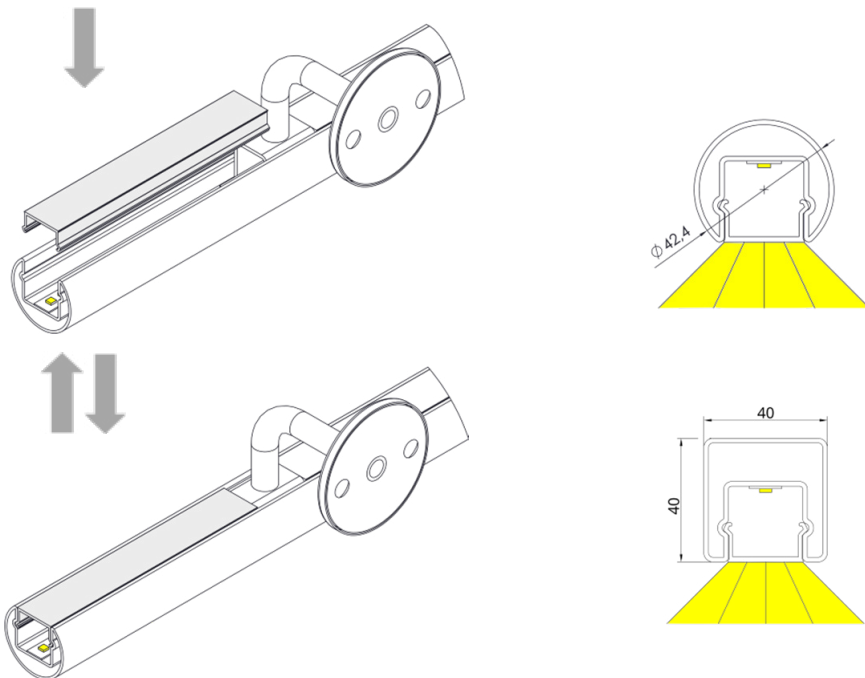
Profile with beads

Installation Instructions:

- For handrail profiles with beads, the PMMA cover is clipped directly into the profile, eliminating the need for retaining clips.
- When used outdoors, consider the coefficient of thermal expansion of the PMMA cover.

Disassembly instructions:

- In the BASIC product line, the cover can be removed without special tools.



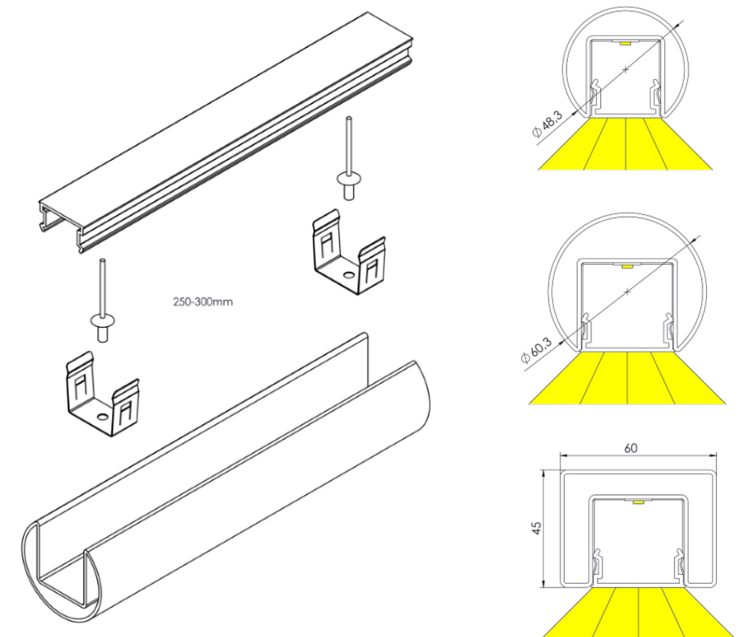
Profile without beads

Installation Instructions:

- For the listed handrail profiles, retaining clips must be used to secure the PMMA cover in place.
- Refer to the respective retaining clip assembly instructions for guidance.
- When used outdoors, take into account the coefficient of thermal expansion of the PMMA cover.

Disassembly instructions:

- In the BASIC product line, the cover can be removed without special tools.



LUX GLENDER BASIC

Plastic cover - asymmetrical

Product-line	Item no.	For groove	For profile	Color	Material	Weight	Delivery length
BASIC	A000244	24 mm	Lilly ø 42,4 mm	clear	PMMA	0,09 kg/m	6010 mm
SAFE	A000242	24 mm	Lilly ø 42,4 mm	clear	PMMA	0,09 kg/m	6010 mm

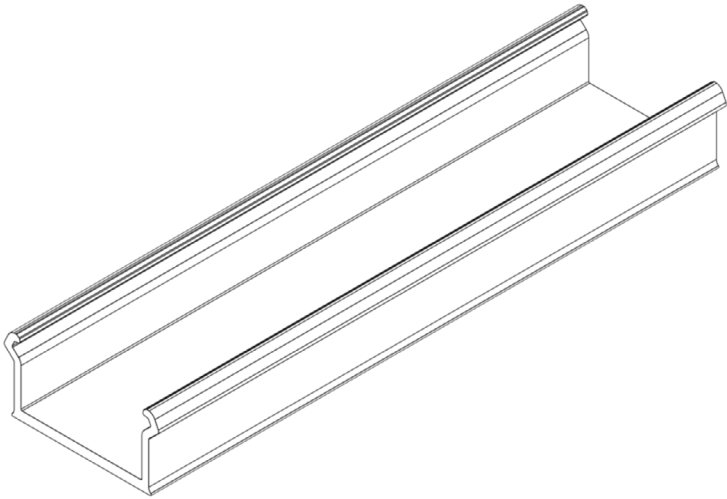
Coefficient of expansion of PMMA cover = ca.85* 10-6 /K bei 20°C - note by installation.
In case of initial length of 1m and a change in temperature of 40K makes a result of >> 3,4mm change in length.
In case of initial length of 6m and a change in temperature of 40K makes a result of >> 20,4mm change in length.

Further colors and forms - on request



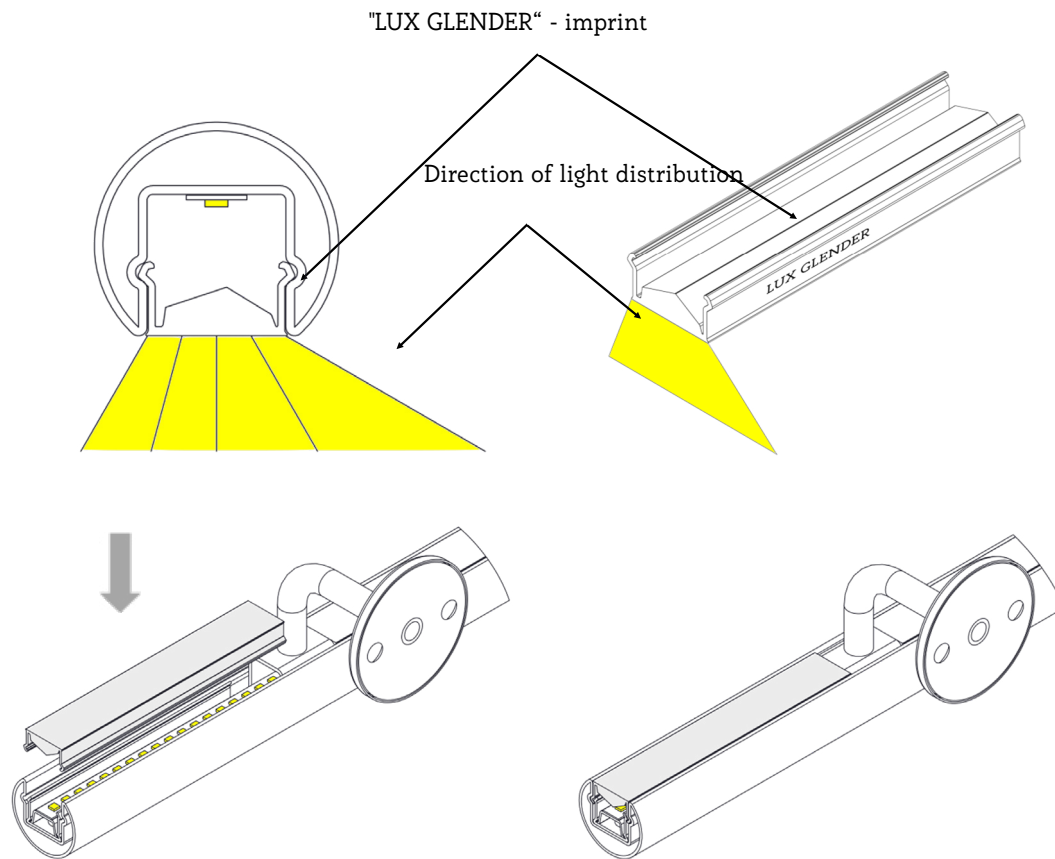
Applies to all of our plastic covers

- Special additional particles for homogeneous and sparkling light distribution
- Excellent optical characteristics
- High light transmission, excellent transparency
- Flammability test according to DIN IEC 60695-2-12 up to 675°C
- High breaking strength and impact resistance
- Good surface hardness
- Very good UV, weather, and aging resistance
- Good recyclability



LUX GLENDER BASIC

Installation Instructions - cover plastic - SAFE asymmetrical



Installation Instructions:

- The prismatic cover can only be used in conjunction with the SAFE system.
- Insert the safety profile and LED carrier profile, lay the LED strip, glue it in, and connect.
- Finally, clip in the asymmetrical cover.
- When using outdoors, please consider the thermal expansion coefficient of the PMMA cover. T
- The direction of light emission is indicated by the print on the side of the prismatic cover. The light is emitted from the side with the imprint LUX GLENDER.

LUX GLENDER - direction of light distribution

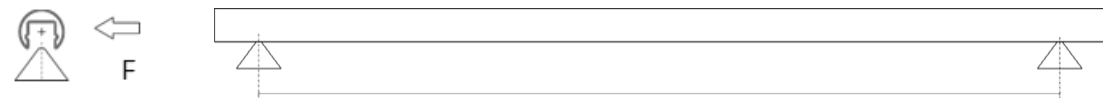
LUX GLENDER BASIC

Support bracket for screwing

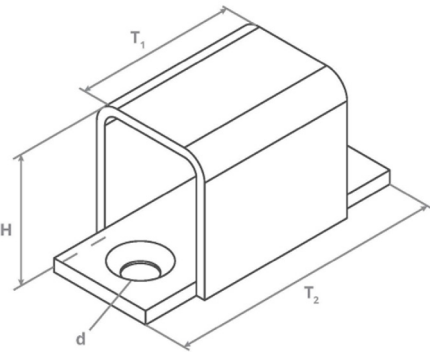
Item no.	For slot	For profile	Surface	Material	H	T1	T2
A000116	24 mm	Lilly ø 42,4 mm Emil 40 x 40 mm	K240	1.4401/04	24 mm	35	60
A000117	27 mm	Paula ø 48,3 mm	K240	1.4401/04	30 mm	35	60
A000118	35 mm	Nina ø 60,3 mm Ronny 60 x 45 mm	K240	1.4401/04	34 mm	35	60

d - 2x countersink for M6 countersunk screws. Distance 40 mm.

Maximum span				
Horizontal payload F		0,5	1	
		kN/m	kN/m	2 kN/m
Maximum distance between two brackets L	A000116	1,6 m	1,0 m	0,4 m
	A000117	1,6 m	1,0 m	0,4 m
	A000118	1,6 m	1,0 m	0,4 m

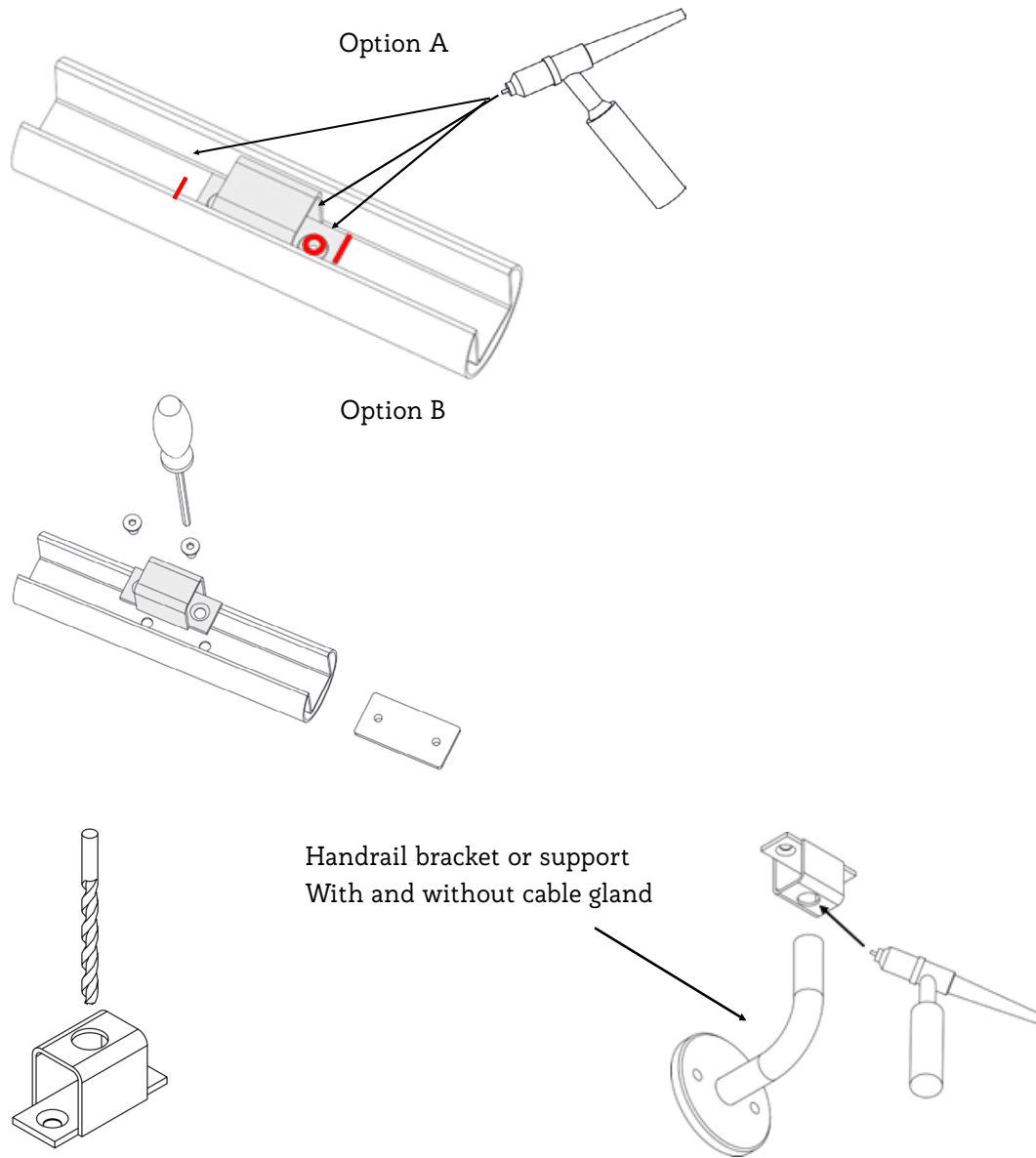


Note: This data applies only to the support brackets, which are compatible with the profiles. Information regarding the distance of handrail holders when using LUX GLENDER brackets can be found in the respective product data sheets. The holders, shorings, and posts provided by the customer must be calculated by the customer. This data specifically pertains to the support brackets when used with a compatible profile.



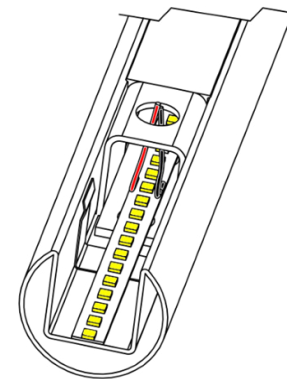
LUX GLENDER BASIC

Support brackets for screwing and welding



Installation Instructions:

- Option A: The support bracket is welded to the handrail profile at the marked areas in the groove.
- Option B: The support bracket is screwed to the profile within the groove. However, due to the small wall thickness of the profile (1.5 mm), it is not sufficient for accommodating a sufficient number of M6 threads in the groove base. Therefore, the use of a sliding block is required. A permanently stable connection is not possible without a slot nut.
- The shape of the base holder allows electrical cables and LED strips to be fed through the groove without, for example, the LED strip having to be interrupted.
- The power feed/power supply line can be routed through the base receptacle by drilling it out for this purpose. Use a hollow handrail bracket, pipe bend, or pipe support for this application. Ensure that there is a sufficient cross-section for the cable inside the pipe and that any burrs are removed.
- Refer to the sliding block data sheet for information on how the sliding block is installed.



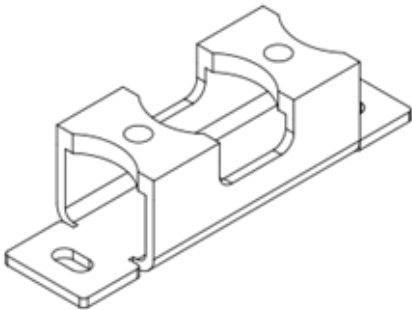
LUX GLENDER BASIC

Seperation base

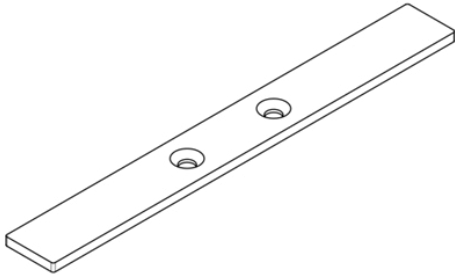
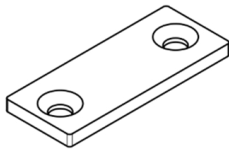
Item no.	For slot	For profile	Surface	Material	Lenght	High	Distance countersink M6	Distance for blind rivets
A000806	24 mm	Lilly ø 42,4 mm Emil 40 x 40 mm	blank	1.4401/04	80 mm	20	34	66 + 1x center
A000807	27 mm	Paula ø 48,3 mm	blank	1.4401/04	80 mm	26	34	66 + 1x center
A000808	35 mm	Nina ø 60,3 mm Ronny 60 x 45 mm	blank	1.4401/04	80 mm	30	34	66 + 1x center

2x countersink for M6 countersunk screws. Distance 34 mm

Item no.	For slot	Surface	Material	Lenght	High	Distance countersink
A000809	24 mm	polished	1.4401	50 mm	4	34
A000810	27 mm	polished	1.4401	50 mm	4	34
A000811	35 mm	polished	1.4401	50 mm	4	34
A000812	24 mm	polished	1.4401	200 mm	4	34
A000813	27 mm	polished	1.4401	200 mm	4	34
A000814	35 mm	polished	1.4401	200 mm	4	34
A000815	24 mm	blank	steel	50 mm	4	34
A000816	27 mm	blank	steel	50 mm	4	34
A000817	35 mm	blank	steel	50 mm	4	34
A000818	24 mm	blank	steel	200 mm	4	34
A000819	27 mm	blank	steel	200 mm	4	34
A000820	35 mm	blank	steel	200 mm	4	34

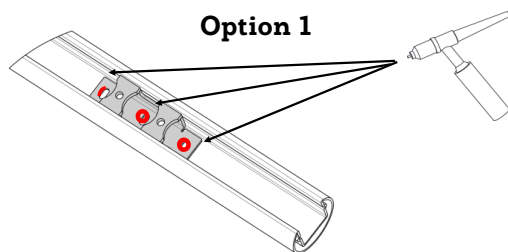


For seperation steel and stainless steel components



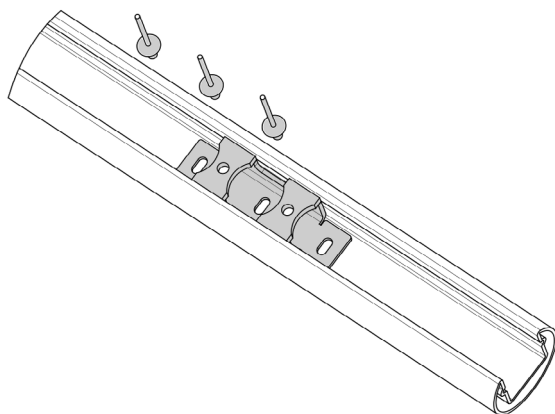
LUX GLENDER BASIC

Installation Instructions - separation base

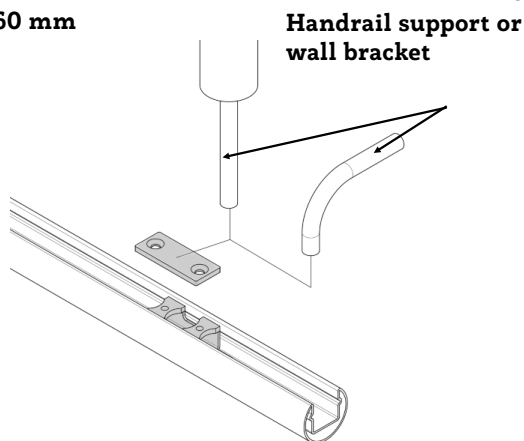


Option 1

Option 2

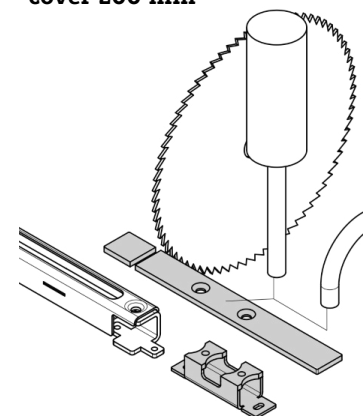


cover 60 mm



**Handrail support or
wall bracket**

cover 200 mm



Installation Instructions :

- Option 1: Separation base is welded to the handrail profile at the marked areas in the groove.
- Option 2: Separation base is fastened in the groove with 3x stainless steel $\varnothing 4$ mm blind rivets.

The cover plate is attached to the separation base using either M6x8 or M6x10 countersunk screws. The cover plate, which has a length of 200 mm, can be adjusted in length if necessary.

The cover plate is available in stainless steel or steel version. Choose the appropriate material, according to the material of the support element.

The shape of the separating base allows electric cables and LED tapes to pass along the groove without having to interrupt the LED tape, for example.

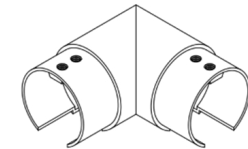
The power feed or power supply can be routed through the separation base by drilling holes in the associated cover plate. For this application, utilize a hollow handrail holder, pipe bend, or pipe support. Ensure that the pipe has a sufficient cross-section to accommodate the cable and is properly deburred for smooth cable passage.

LUX GLENDER BASIC

Corner connector 90° and joint connector

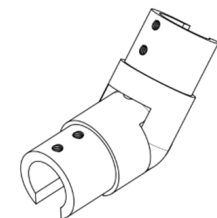
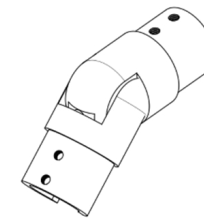
Corner connector 90°

Item no.	For profile	Surface	Material	Type
A000720	Lilly ø 42,4 mm	polished	1.4301	horizontal
A000721	Lilly ø 42,4 mm	polished	1.4301	vertical



Joint connector

Item no.	For profile	Surface	Material	Type
A000726	Lilly ø 42,4 mm	polished	1.4301	up
A000727	Lilly ø 42,4 mm	polished	1.4301	down



Installation Instructions:

- The corner or joint connectors can be secured by either screwing them into the profile or using a stainless steel adhesive for bonding.

IMPORTANT: Do not use these corner connectors and joint connectors as load-bearing components.

LUX GLENDER BASIC

Joint closures

Joint closures

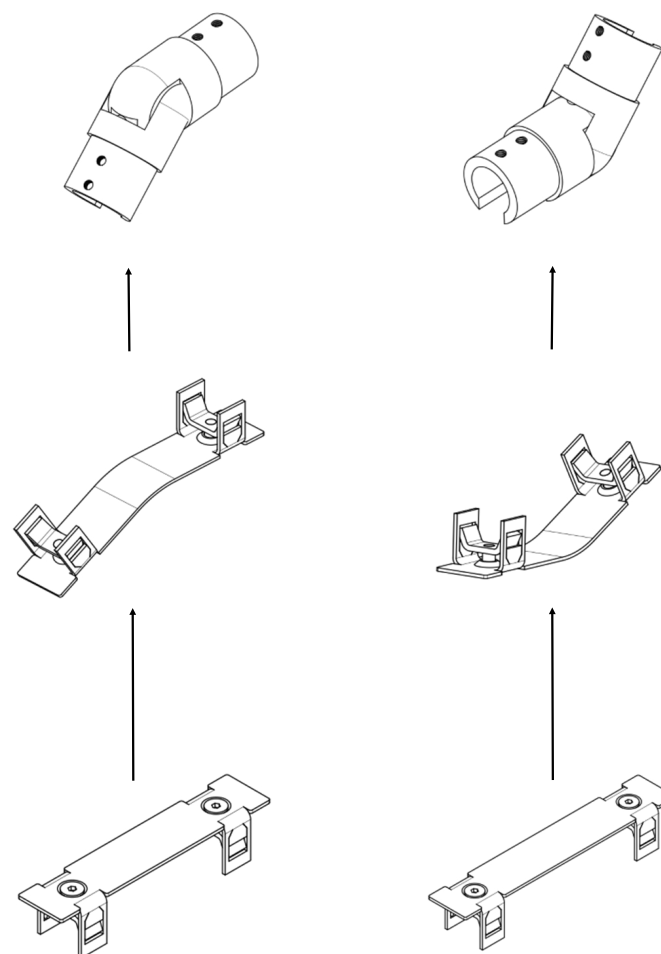
Item no.	For profile	Surface	Material	Type	Lenght	Suitable for joint
A000822	Lilly ø 42,4 mm	polished	1.4401	up	85 mm	A000726
A000823	Lilly ø 42,4 mm	polished	1.4401	down	65 mm	A000727

Installation Instructions:

- The joint closure is first bent by hand or with the help of tools to the appropriate shape.
- Then, joint closure is simply placed in the profile groove and tightened with the help of wrench. The fastening screw is included in the scope of delivery.
- Press the joint lock in until it reaches the bottom of the groove, ensuring it can be tightened properly.
- The shutter can be inserted directly over the LED strip; there's no need to separate the LED strip. It's important to use only original parts of the shutter.

Disassembly instructions:

- Loosen the screw and pull the cap out of the groove.
A flat screwdriver is helpful for disassembly.



LUX GLENDER BASIC

Lock BASIC and SAFE

Item no.	For groove	Option	For profile	Material
A000447	24 mm	End-lock	Lilly ø 42,4 mm	1.4401/04
A000448	24 mm	Intermediate-lock	Lilly ø 42,4 mm	1.4401/04

End-lock is used on the end pieces and support brackets.

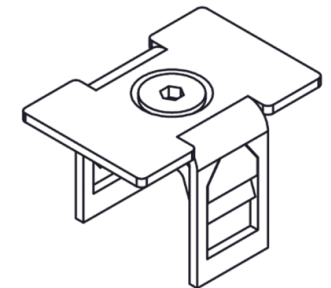
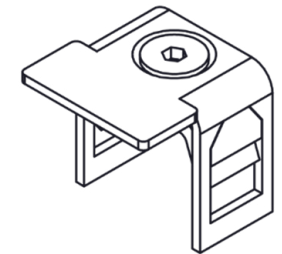
Intermediate lock is used between two covers.

The lock generally prevents access to the interior of the LED handrail.

Below the closure, the cover can expand or contract when the temperature changes.

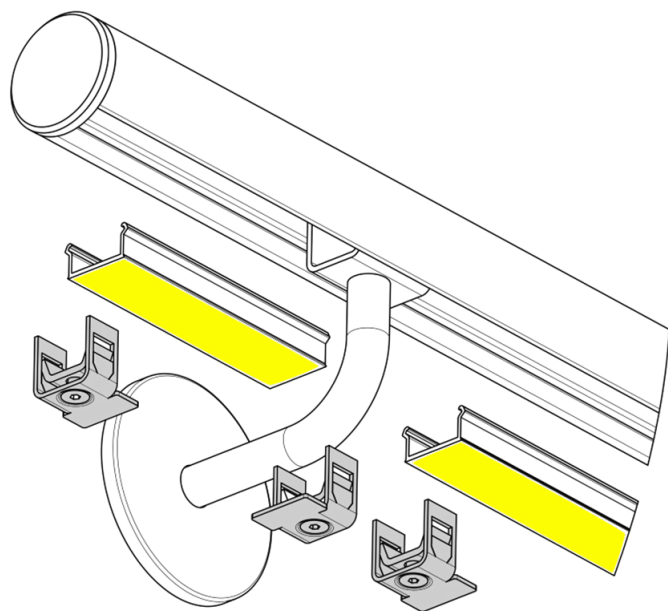
The closure increases the insect protection. Fewer insects can get inside the handrail.

With the SAFE product line, the lock is required for the non-destructive removal of the cover.



LUX GLENDER BASIC

Installation Instructions - lock SAFE

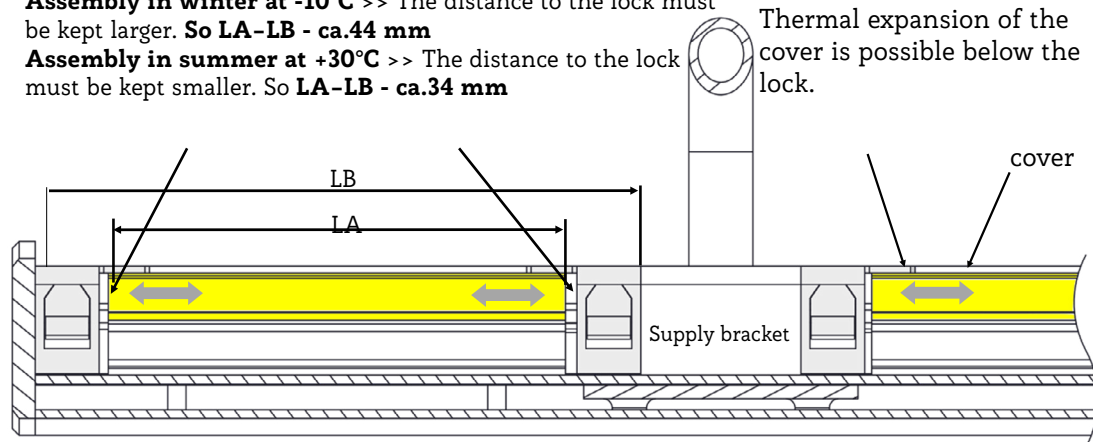


With an LB distance of approx. 1.2m applies as a guideline
LA-LB - ca.40 mm

Assembly in winter at -10°C >> The distance to the lock must be kept larger. So LA-LB - ca.44 mm

Assembly in summer at +30°C >> The distance to the lock must be kept smaller. So LA-LB - ca.34 mm

Thermal expansion of the cover is possible below the lock.

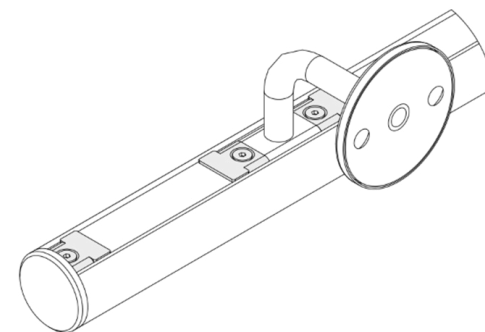


Installation Instructions:

- The end-lock is simply placed in the profile groove and tightened with the help of Inbus-security screw bits. The fastening screw is included in the scope of delivery.
- Press the lock down to the bottom of the groove so that it can be tightened properly.
- In order to be able to mount the lock, the securing profile must be cut out at the location of the lock.
- The lock can be used directly over the LED strip; it is not necessary to separate the LED strip. It is important to use only original parts from the closure so that the LED strip is not damaged.
- **Important** - expansion coefficient of the PMMA cover = about $85 \cdot 10^{-6} / K$ at $20^\circ C$
- An initial length of 1 m and a temperature change of 40K results in >> 3.4 mm change in length.
- An initial length of 6 m and a temperature change of 40K results in >> 20.4 mm change in length.

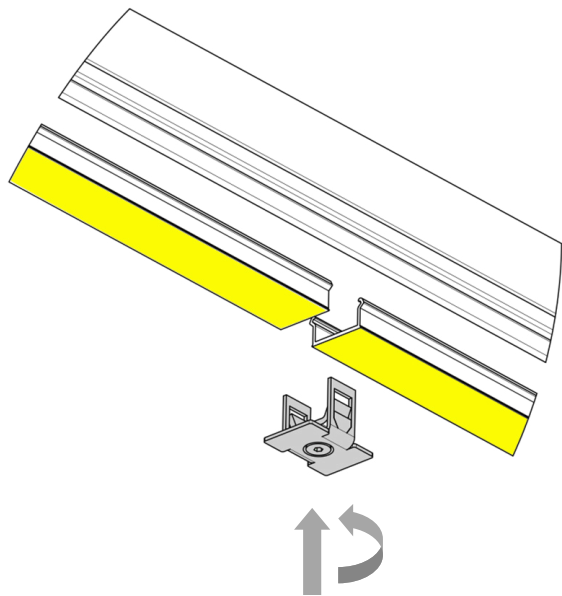
Disassembly instructions:

- Loosen the safety screw and pull the lock out of the groove. A flat screwdriver is helpful during disassembly.



LUX GLENDER BASIC

Installation Instructions - lock BASIC PLUS



With a distance between two closures of 6m applies as a guide
LA-LV - ca.10 mm

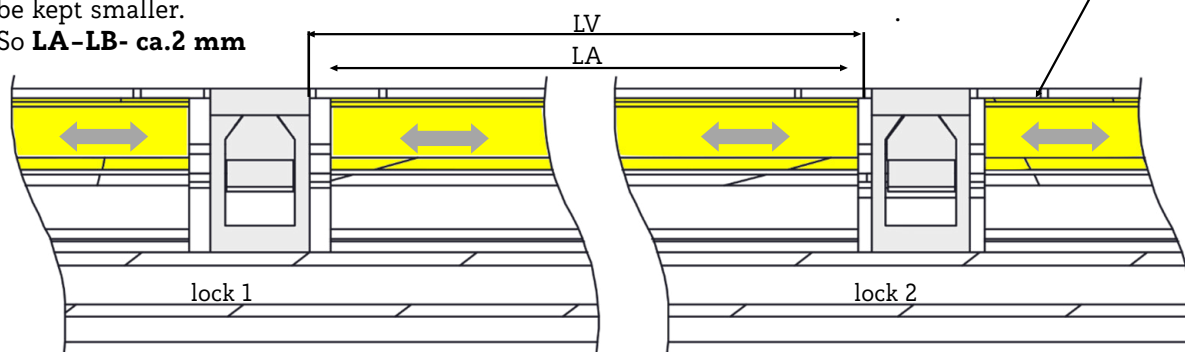
Assembly in winter at -10°C >> The distance to the lock must be kept larger.

So LA-LB- ca.20 mm

Assembly in summer at +30°C >> The distance to the lock must be kept smaller.

So LA-LB- ca.2 mm

Thermal expansion of the cover is possible below the lock.

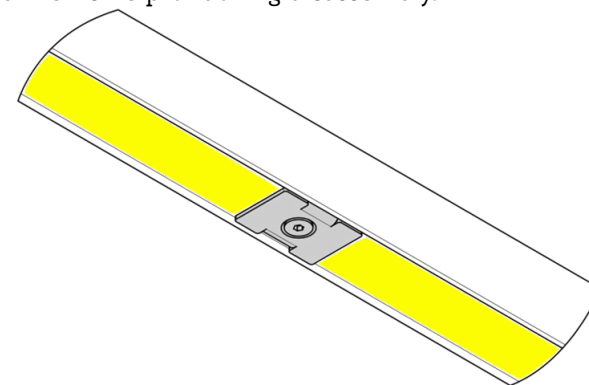


Installation Instructions:

- The intermediate lock is simply placed in the profile groove and tightened with the help of Allen security screw bits. The fastening screw is included in the scope of delivery.
- Press the lock down to the bottom of the groove so that it can be tightened properly.
- In order to be able to mount the lock, the securing profile must be cut out at the location of the lock.
- The fastener can be inserted directly over the LED strip, it is not necessary to separate the LED strip. It is important to use only original parts from the fastener so that the LED strip is not damaged.
- **Important** - expansion coefficient of the PMMA cover = about $85 \cdot 10^{-6} / K$ at $20^\circ C$.
- An initial length of 1m and a temperature change of 40K results in $>> 3.4$ mm change in length.
- An initial length of 6m and a temperature change of 40K results in $>> 20.4$ mm change in length.

Disassembly instructions:

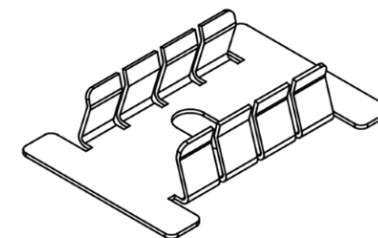
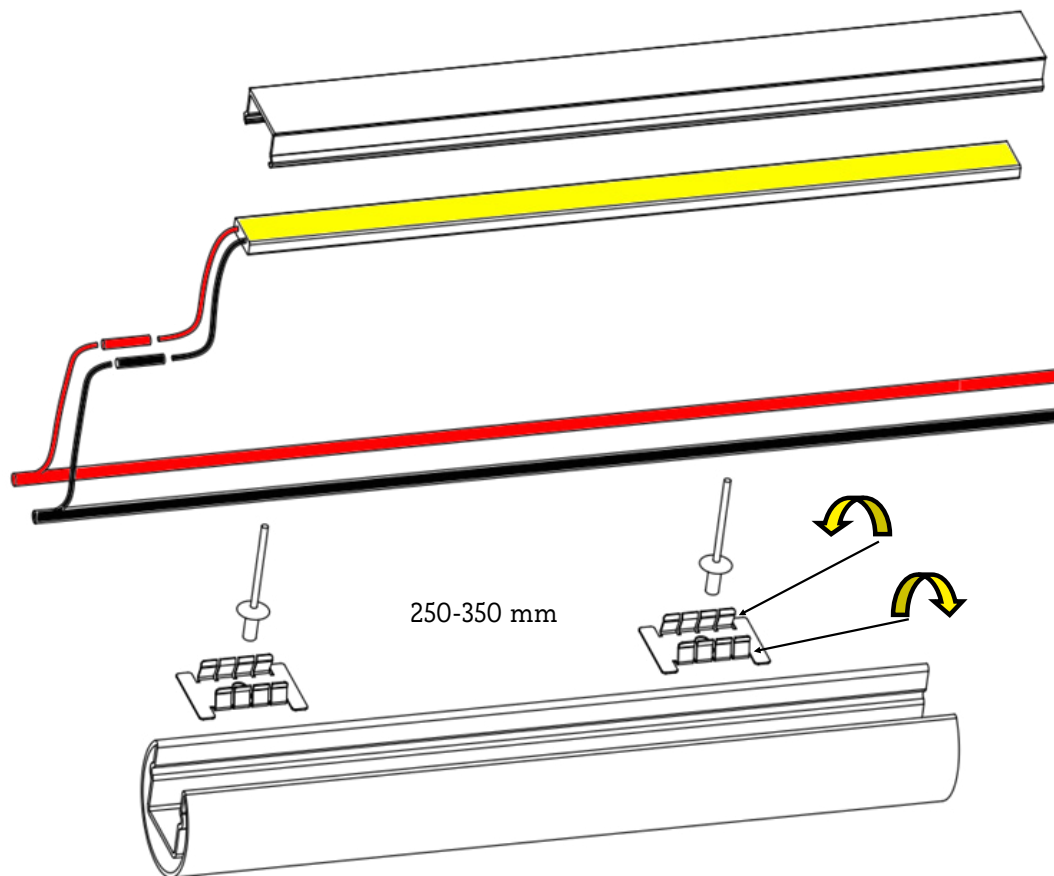
- Loosen the safety screw and pull the lock out of the groove. A flat screwdriver is helpful during disassembly.



LUX GLENDER BASIC

Retaining clip for cable and LED strip - groove 24 mm

Item no	For groove	For profile	Surface
A000926	24 mm	Lilly ø 42,4 mm Emil 40 x 40 x 1,5 mm	1.4401/04



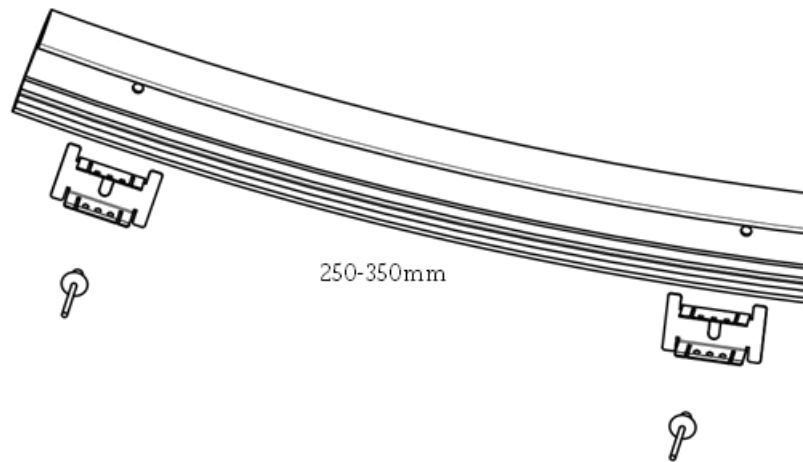
The retaining clip for the cable and LED strip is primarily used to lay the cables next to the LED strip. Only one power supply is necessary for longer handrails.

- As an additional function, the LED strip can be held extra mechanically in the IP65 version.
- Retaining clips for cables are fixed with blind rivets or by tacking. The distance between the clips should be 250-350 mm.
- Cables (up to approx. ø 6 mm or 6 mm²) can be laid next to the LED tape, the cables are fixed by folding the tabs.
- Folding the tabs in the other direction additionally supports the LED strip against lowering.

LUX GLENDER BASIC

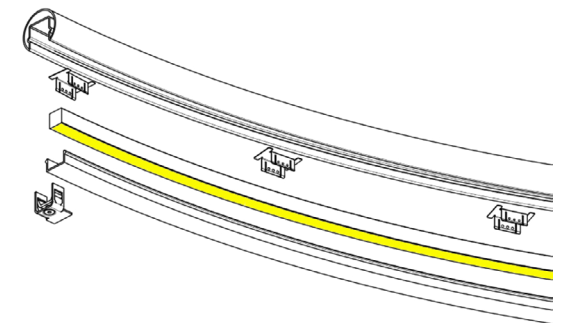
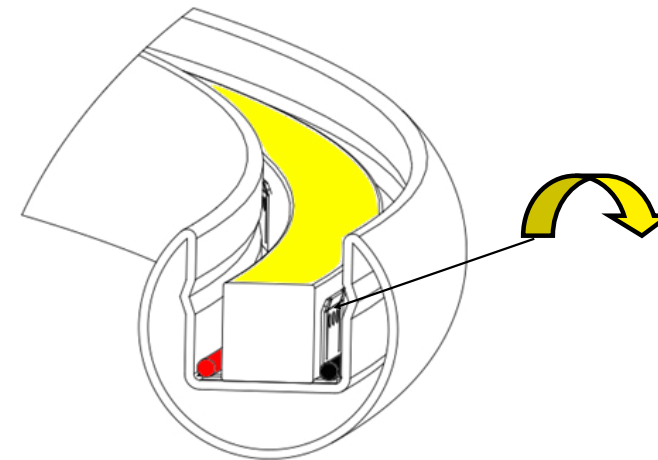
Retaining clip for NEON-Flex for system BASIC - groove 24 mm

Item no	For groove	For profile	Surface
A000855	24 mm	Lilly ø 42,4 mm Emil 40 x 40 x 1,5 mm	1.4401/04



The retaining clip for NEON Flex is required when using the LED NEON Flex tape.

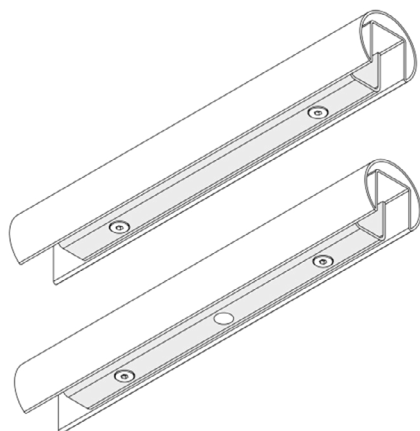
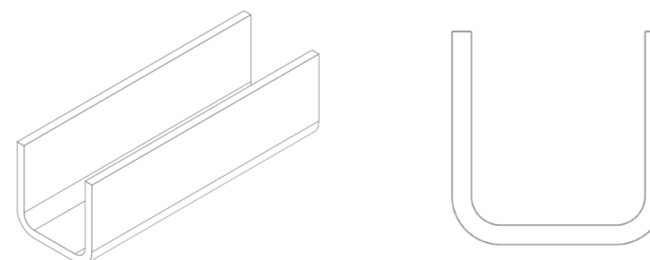
- Cables (up to approx. ø5 mm or 4 mm²) can be laid next to the NEON Flex tape. For this purpose, the cables can be fastened by folding over the tabs.
- Retaining clips for cables are fastened with blind rivets or by tacking. The distance between the retaining clips should be 250-350 mm.



LUX GLENDER BASIC

Slot locking profile

Item no.	For slot	For profile	Surface	Material	Weight	Delivery length
A000204	24 mm	Lilly ø 42,4 mm Emil 40 x 40 mm	K240	1.4301/07	1,10 kg/m	2990 mm
A000113	24 mm	Lilly ø 42,4 mm Emil 40 x 40 mm	K240	1.4401/04	1,10 kg/m	2990 mm
A000205	27 mm	Paula ø 48,3 mm	K240	1.4301/07	1,25 kg/m	2990 mm
A000053	27 mm	Paula ø 48,3 mm	K240	1.4401/04	1,25 kg/m	2990 mm
A000206	35 mm	Nina ø 60,3 mm Ronny 60 x 45 mm	K240	1.4301/07	1,48 kg/m	2990 mm
A000054	35 mm	Nina ø 60,3 mm Ronny 60 x 45 mm	K240	1.4401/04	1,48 kg/m	2990 mm



Installation Instructions:

- The slot locking profile is used to close the open spaces between the LED elements. Electrical plugs can also be accommodated below the slot closure profile.
- The slot locking profile is offered in 3 m bars and must be sawn to the desired length by the processor.
- Countersinks for the M6 countersunk head screws are created in the slot closure profile. The processor determines the distances according to his planning.
- When using Sliding block to reinforce the groove bottom, handrail holders or supports can be welded directly to the slot locking profile. With this option, the support brackets can be dispensed with.

LUX GLENDER BASIC

Universal fixing bolt

Item no.	For slot	For profile	Material	L	A1	A2	M
A000022	24 mm	Lilly ø 42,4 mm Emil 40 x 40 mm	1.4401/04	130 mm	10 mm	40 mm	M6
A000030	27 mm	Paula ø 48,3 mm	1.4401/04	130 mm	10 mm	40 mm	M6
A000021	35 mm	Nina ø 60,3 mm Ronny 60 x 45 mm	1.4401/04	130 mm	10 mm	40 mm	M6

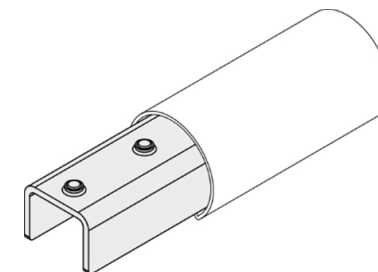
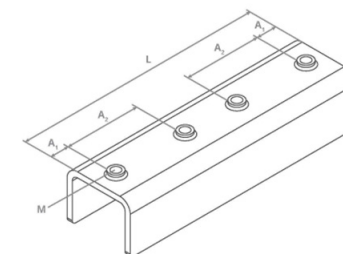
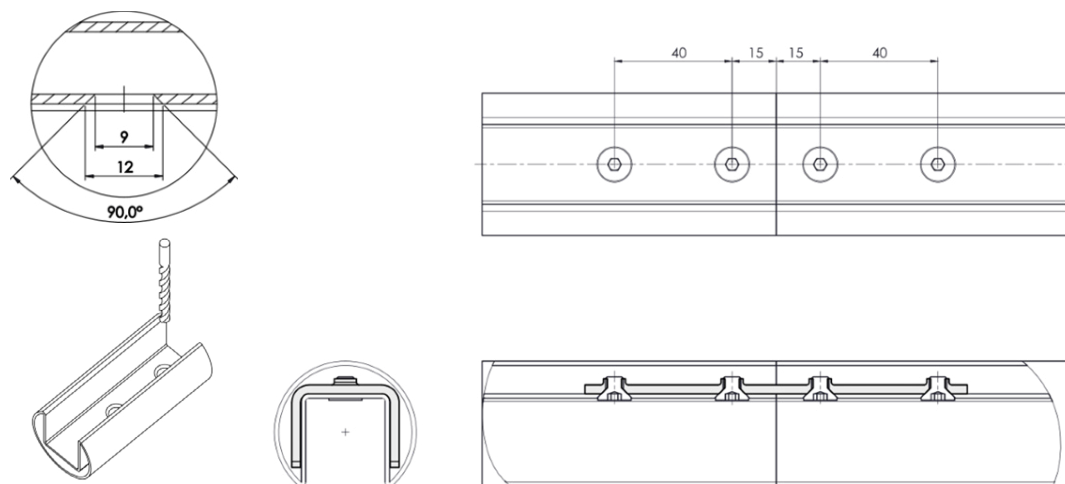
Incl. 4x countersunk screws ISO 10642 / DIN 7991 A4 M6x8

Universal connector enables hairpin joints without a waistband.

Connection lies in the cavity of the profile and is invisible from the outside.

The universal connector was dimensioned as a load-bearing component and successfully tested by the LGA (Landesgewerbeanstalt Bayern) up to 19 kN static load.

If the joint is between two nozzles, the universal connector absorbs the forces of up to 19 kN without breaking.



Installation Instructions:

- The profiles are drilled through and countersunk on the inside of the groove. Countersunk head screws are more space-saving and must be used with all-glass railings and LED applications. Flat head or pan head screws can also be used for other applications.
- Refer to the sketch for the drilling distances or use our auxiliary template. The template makes your work easier, especially when working on the construction site.
- One side of the connector is pushed into one of the two profile pieces and screwed tight.
- Then the second tube is pushed in and screwed.

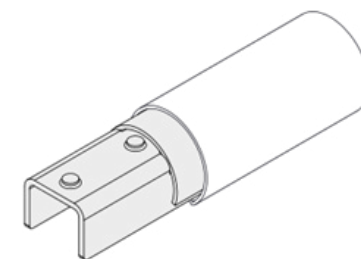
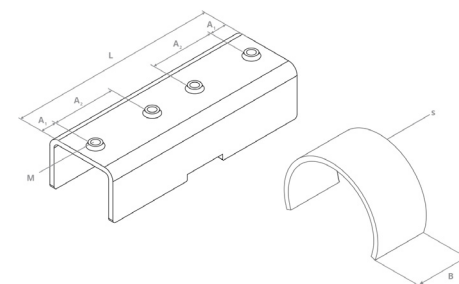
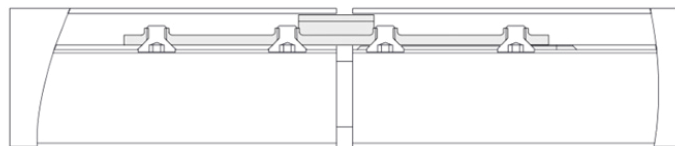
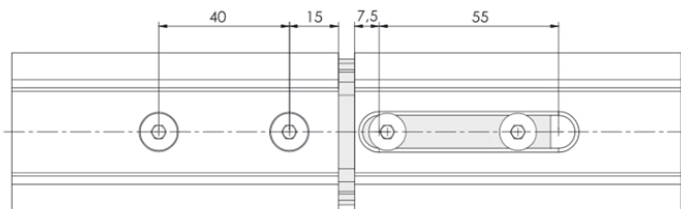
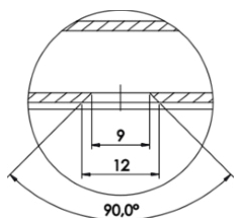
LUX GLENDER BASIC

Universal fixing bolt with a clamp for expansion gap

Item no.	For profile	Material	L	A1	A2	M	B	s
A000028	Lilly ø 42,4 mm	1.4401/04	130 mm	10 mm	40 mm	M6	23	2
A000029	Paula ø 48,3 mm	1.4401/04	130 mm	10 mm	40 mm	M6	23	2
A000031	Nina ø 60,3 mm	1.4401/04	130 mm	10 mm	40 mm	M6	23	2
A000033	Emil 40 x 40 mm	1.4401/04	130 mm	10 mm	40 mm	M6	23	2
A000032	Ronny 60 x 45 mm	1.4401/04	130 mm	10 mm	40 mm	M6	23	2

Incl. 4x countersunk screws ISO 10642 / DIN 7991 A4 M6x8.

Universal fixing bolt with a clamp to adjust the gap caused by thermal expansion.



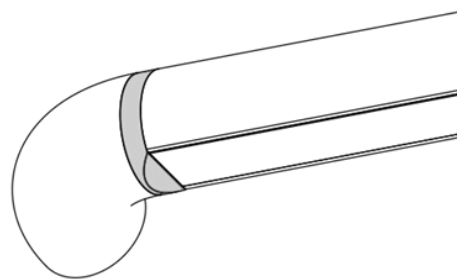
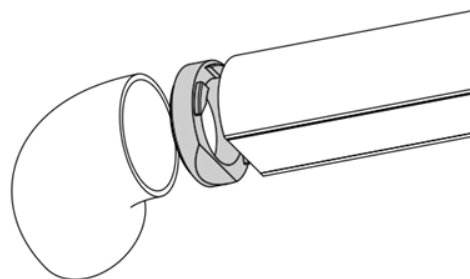
Installation Instructions:

- The tubes are drilled through and countersunk or milled on the inside of the groove. Countersunk head screws are more space-saving and must be used with all-glass railings and LED applications. Flat head or pan head screws can also be used for other applications.
- For the expansion joint, screw the universal connector tightly to one end of the profile, as with a hair pile. Then mill an elongated hole in the other end of the profile, which allows movement when the material expands.
- The clamp sits in a recess in the universal connector, but can also be attached to one end of the profile.
- We recommend an expansion joint every 12 m.

LUX GLENDER BASIC

Groove tube - ring

Item no.	For profile	Surface	Material
A000983	Lilly ø 42,4 mm	blank	1.4401/04
A000984	Paula ø 48,3 mm	blank	1.4401/04
A000985	Nina ø 60,3 mm	blank	1.4401/04



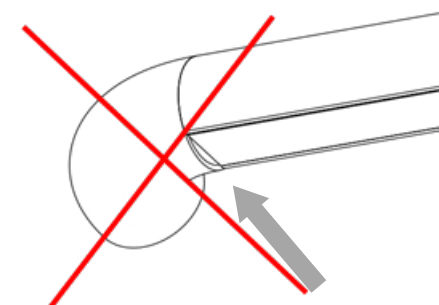
Grooved tube - ring is used with a LED handrail at the transitions between a round tube / tube bends and groove tube. The ring closes the gap between round tube and groove tube.

This groove tube - ring is suitable for the round tubes and bends with 2mm wall thickness. Other sizes on request.

Installation Instructions:

Insert the ring between the round tube / tube bend and the grooved tube and weld.

Then grind the weld seams.



LUX GLENDER BASIC

Handrail holder hollow and full

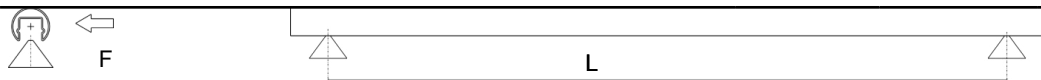
Item no.	For profile	H (mm)	T1 (mm)	T2 (mm)	A (mm)	F (mm)	D1 (mm)	d1 (mm)	D2 (mm)	d2 (mm)	Incl. rosette
A000247	All profiles	50	81	4	50	-	75	M6 counter-sunk	14	10	yes
A000248	All profiles	50	81	4	50	-	75	M6 counter-sunk	14	10	yes

Material: 1.4401/04

Maximum span

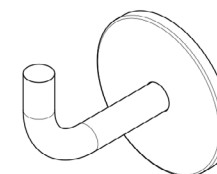
Horizontal payload F

	0,5 kN/m	1 kN/m	2 kN/m
Maximum handrail holder span L	A000247 1,1 m	0,55 m	0,25 m
	A000248 1,5 m	0,75 m	0,35 m

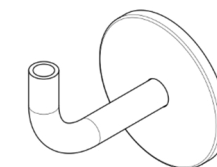


Note: This information only applies to LUX GLENDER handrail holders in conjunction with our supply brackets and handrail profiles.

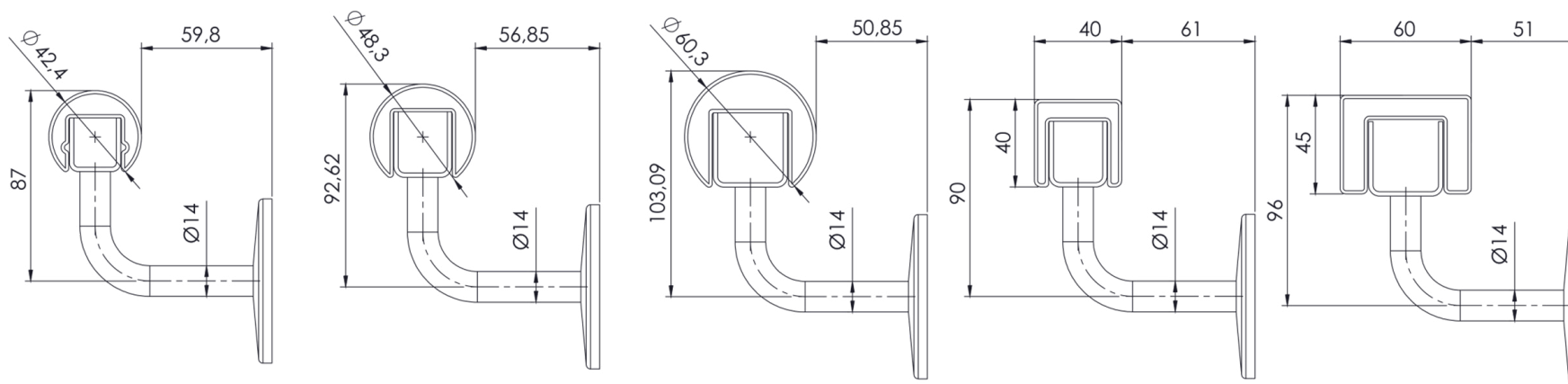
Construction and assembly substrates or fastening materials are not taken into account for the maximum distances and must be designed and checked by the customer.



with rosette



with rosette



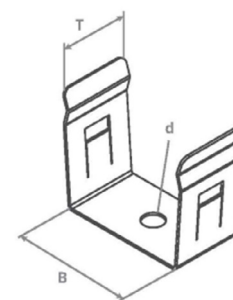
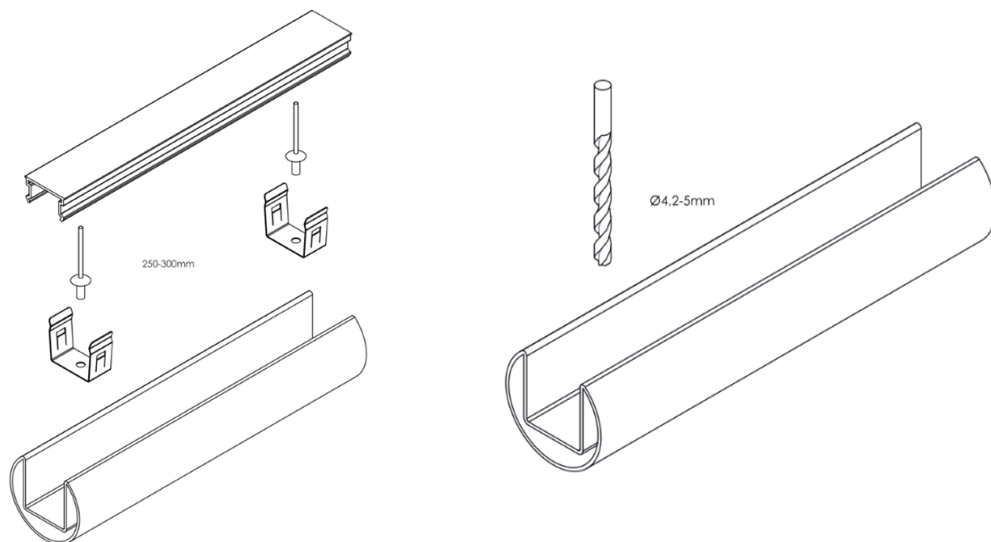
LUX GLENDER BASIC

Retaining clips

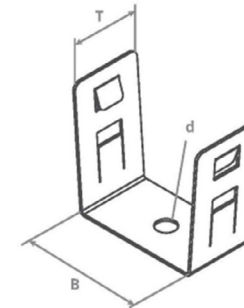
Item no.	For groove	For profile	B	T	d	Type of clip
A000180	27 mm	Paula ø 48,3 mm	27 mm	15 mm	4,2 mm	Reversibel
A000181	35 mm	Nina ø 60,3 mm Ronny 60 x 45 mm	35 mm	15 mm	4,2 mm	Reversibel
A000182	27 mm	Paula ø 48,3 mm	27 mm	15 mm	4,2 mm	Irreversibel
A000183	35 mm	Nina ø 60,3 mm Ronny 60 x 45 mm	35 mm	15 mm	4,2 mm	Irreversibel

The retaining clips are used to fasten plastic cover profiles. With the "Reversibel" clip type the non-destructive removal of the cover is possible at any time. With the "Fest" type the non-destructive disassembly is not possible. This clip type protects the LED strip against vandalism and theft. All of the clips have two additional cable clamps as opening windows for carrying a cable harness.

The clips are necessary for all product lines - excepted Lilly. We recommend to fasten the clips with blind rivets in the profile slot. You can also tack-weld, glue or use M3/M4 screws for fastening. We recommend to install 4 clips per meter of plastic cover, as well as one clip at the beginning and the end of cover profile.



Revisibel



Irreversibel

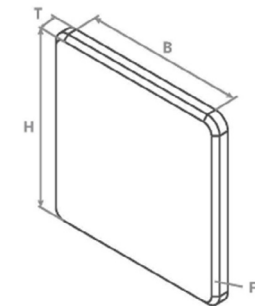
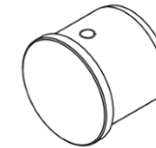
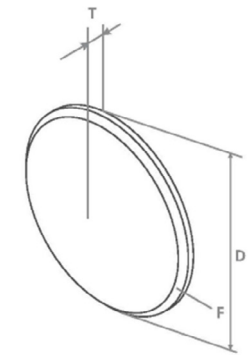
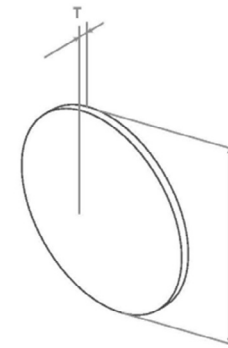
Installation Instructions:

- To attach the plastic groove cover in the profile without beading, you need retaining clips.
- We recommend that you fix the retaining clips in the profile groove tube with blind rivets. You can also attach, glue or fasten the retaining clips with M3 / M4 screws.
- We recommend installing 4 retaining clips per meter of plastic cover and one clip at the beginning and one at the end of a profile.
- After installing the retaining springs, the profile is simply clipped in.

LUX GLENDER BASIC

End cap for welding and screwing

Item no.	For profile	Material	Schape	Form	D	B	H
A000092	welding	Lilly ø 42,4 mm	1.4401/04	flat	42,4 mm	-	-
A000093	welding	Paula ø 48,3 mm	1.4401/04	flat	48,3 mm	-	-
A000090	welding	Paula ø 48,3 mm	1.4401/04	arched	48,3 mm	-	-
A000094	welding	Nina ø 60,3 mm	1.4401/04	flat	60,3 mm	-	-
A000091	welding	Nina ø 60,3 mm	1.4401/04	arched	60,3 mm	-	-
A000095	welding	Emil 40 x 40 mm	1.4401/04	flat	-	40 mm	40 mm
A000096	welding	Ronny 60 x 45 mm	1.4401/04	flat	-	60 mm	45 mm
A000214	screwing/ sticking	Lilly ø 42,4 mm	1.4401/04	flat	42,4 mm		
A000299	screwing	Paula ø 48,3 mm	1.4401/04	flat	48,3 mm		
A000300	screwing	Paula ø 48,3 mm	1.4401/04	arched	48,3 mm		
A000301	screwing	Nina ø 60,3 mm	1.4401/04	flat	60,3 mm		
A000302	screwing	Nina ø 60,3 mm	1.4401/04	arched	60,3 mm		
A000303	screwing/ sticking	Emil 40 x 40 mm	1.4401/04	flat		40 mm	40 mm



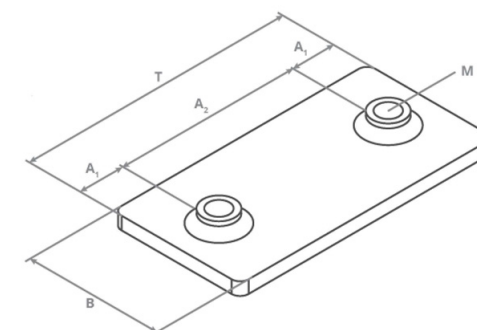
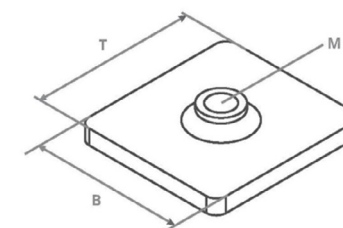
End cap options may vary.

LUX GLENDER BASIC

Sliding block - simple and dual

Item no.	For profile	Material	B	T	M
A000130	Lilly ø 42,4 mm Paula ø 48,3 mm	1.4571	28 mm	30 mm	M6
A000131	Nina ø 60,3 mm	1.4571	45,75 mm	25 mm	M6
A000132	Emil 40 x 40 mm	1.4571	35 mm	30 mm	M6
A000133	Ronny 60 x 45 mm	1.4571	55 mm	25 mm	M6

Item no.	For profile	Material	B	T	A1	A2	M
A000138	Lilly ø 42,4 mm	1.4571	28 mm	60 mm	10 mm	40 mm	M6
A000134	Paula ø 48,3 mm	1.4571	30 mm	60 mm	10 mm	40 mm	M6
A000135	Nina ø 60,3 mm	1.4571	46 mm	60 mm	10 mm	40 mm	M6
A000136	Emil 40 x 40 mm	1.4571	35 mm	60 mm	10 mm	40 mm	M6
A000137	Ronny 60 x 45 mm	1.4571	55 mm	60 mm	10 mm	40 mm	M6

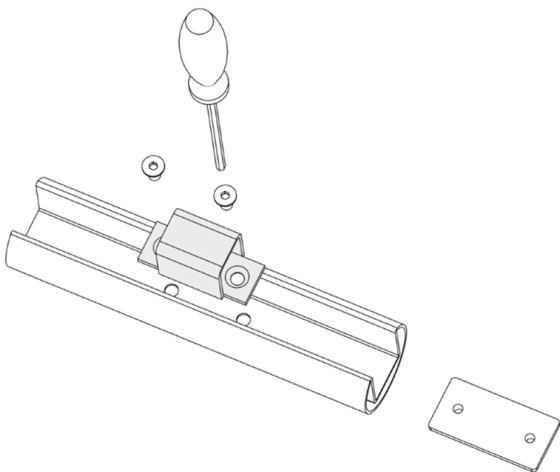
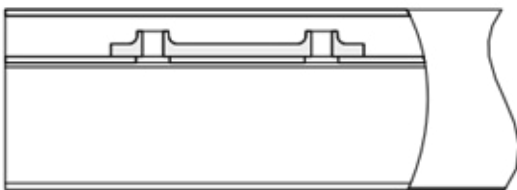
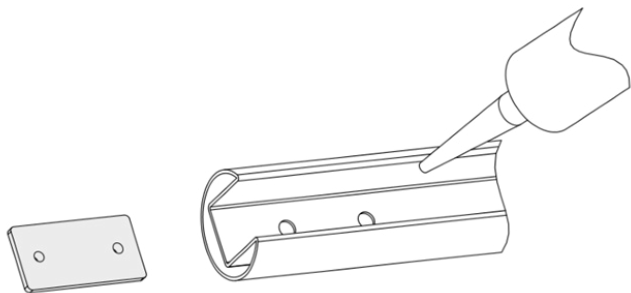


Notes

Sliding block enable a firm connection of handrail profiles and accessories, because the wall thickness of the handrail profiles does not even allow sufficient threads for M6 screws. Sliding block should also be used if the accessories are not welded directly to the handrail.

LUX GLENDER BASIC

Installation Instructions - sliding block



Installation Instructions:

- The wall thickness of the handrail profile is 1.5 mm, so that a stable screw connection with M6 screws is possible, the groove base must be reinforced with the aid of a slot nut will.
- To do this, place the profile on the work stands with the groove facing up.
- Drill 8 - 20 mm holes in the bottom of the groove. The larger holes of 20 mm allow the material to expand when the temperature changes.
- Insert a scribe or screwdriver into the first hole. So the sliding block is not pushed further than necessary.
- Then push the sliding block into the cavity with the help of a suitable insertion aid. For example with a wooden, plastic or stainless steel stick. If the screwdriver moves you are far enough.
- Take the screwdriver out of the hole and carefully push the sliding block a few centimeters further.
- Use the screwdriver to position the sliding block concentrically to the drilling hole.
- To prevent the sliding block from slipping in the cavity, it's recommended to use a neutral-curing silicone. Apply the silicone around the sliding block, then screw in the screw and let the silicone dry. This ensures the sliding block maintains its position.
- After the silicone has dried, you can loosen the screw again.
- Insert one sliding block at a time, not all in a row. Begin with the hole farthest away and work your way up to the hole closest to the end of the pipe.
- Lastly, it emphasizes the importance of using neutral-curing silicone and not vinegar-curing silicone.

LUX GLENDER BASIC

LUX GLENDER GMBH
Schreinerstraße 6/1
73257 Köngen

+49 7024 - 40 59 530
lux-glender.com
info@lux-glender.com

Technical modifications are subject to reservation.
05-2024